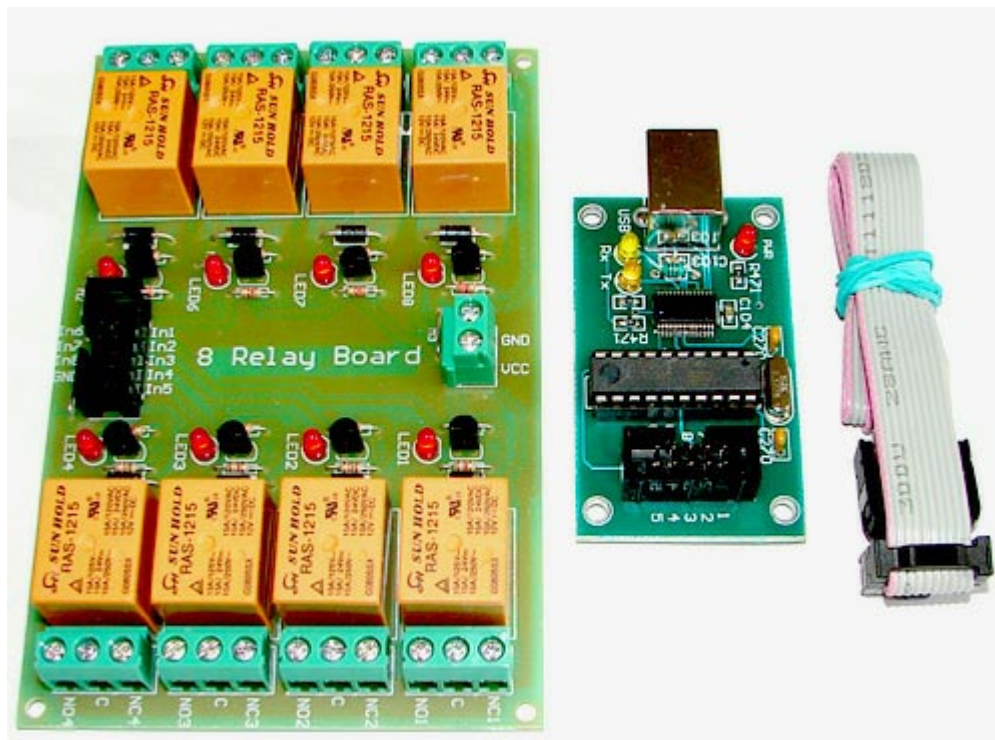
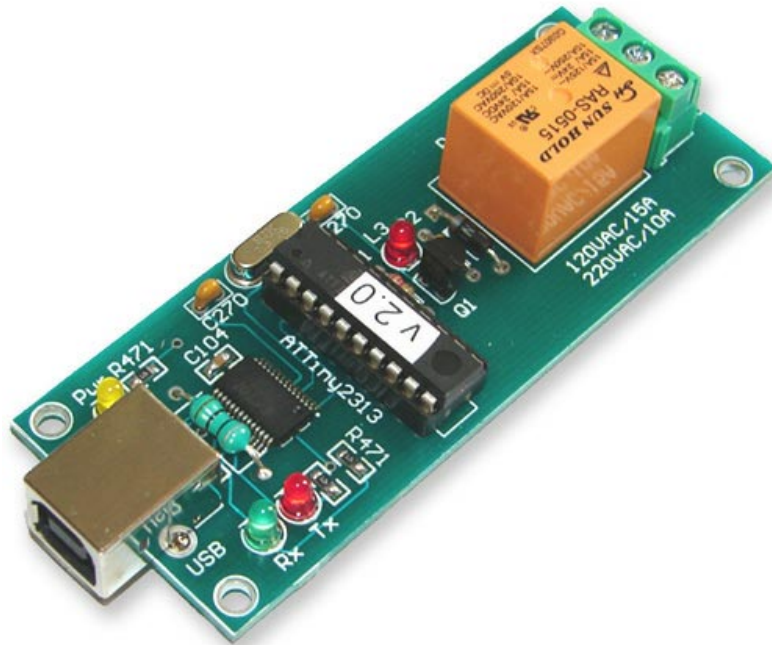


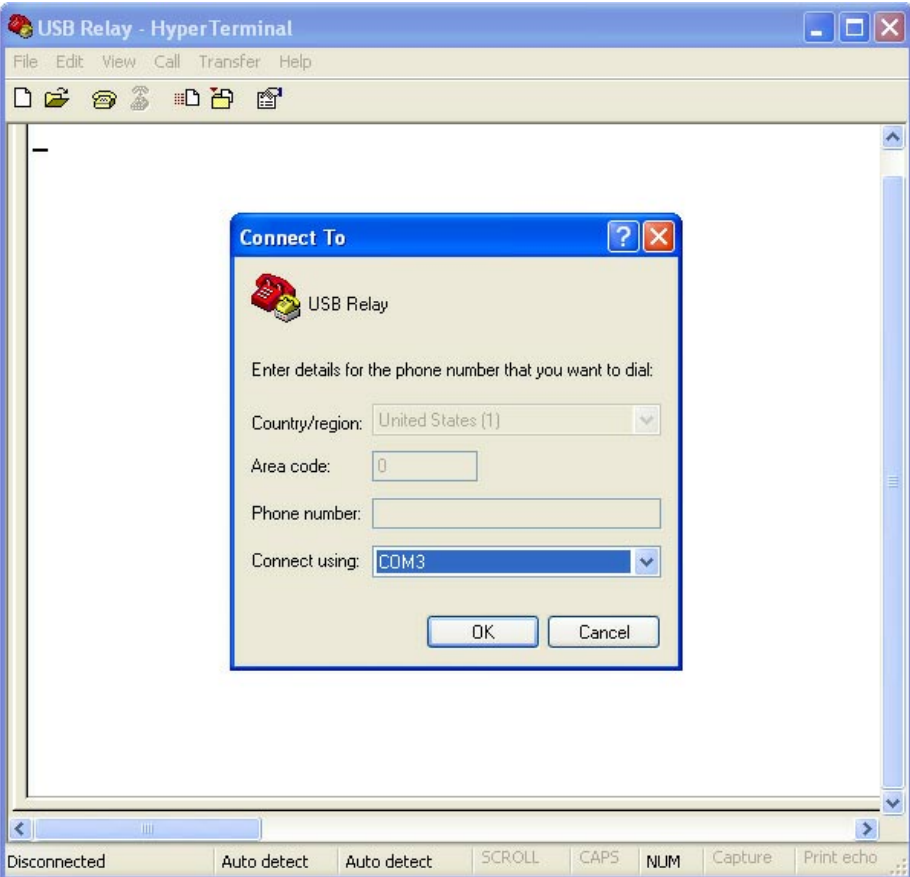
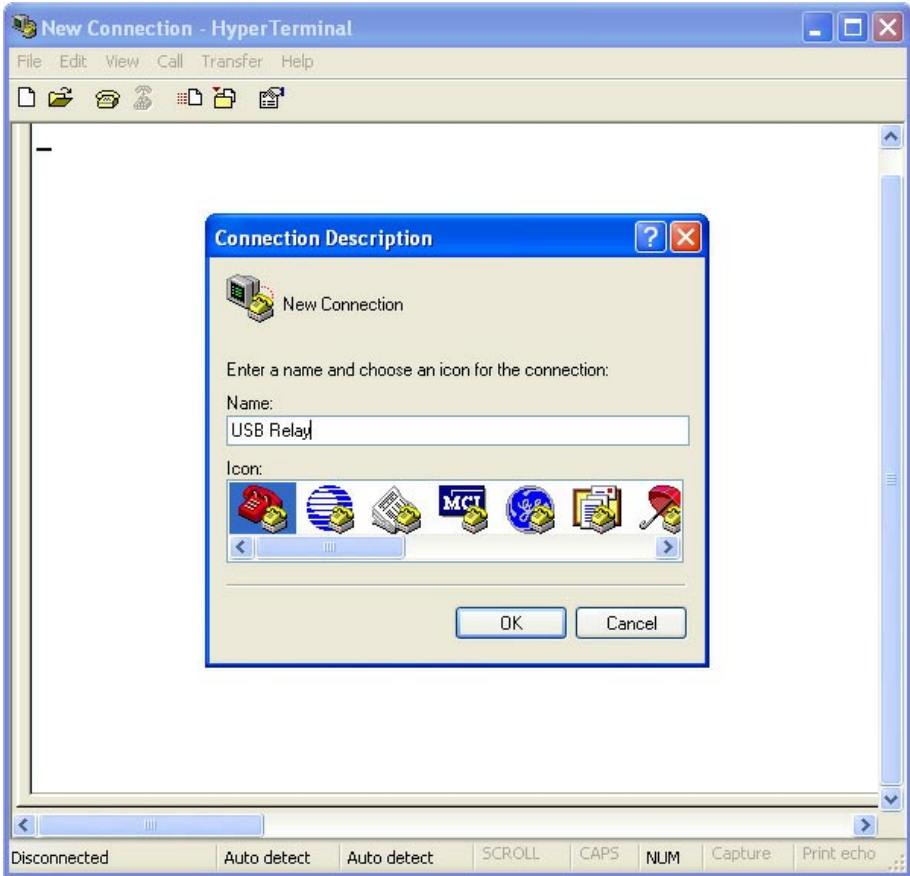
SOFTWARE EXSAMPLES

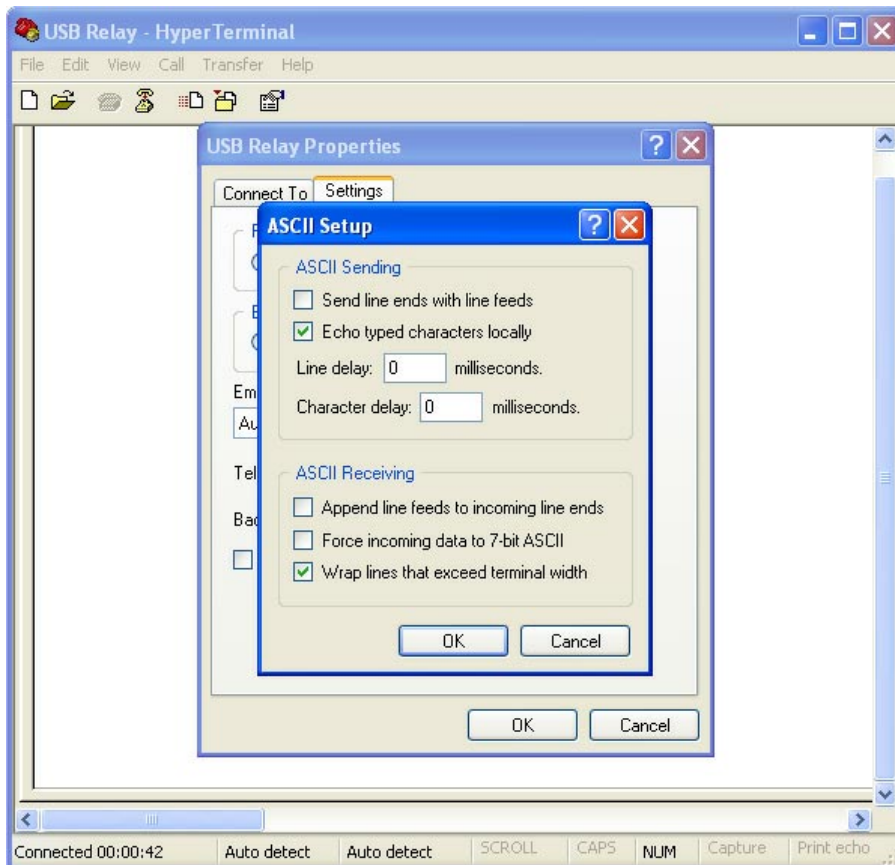
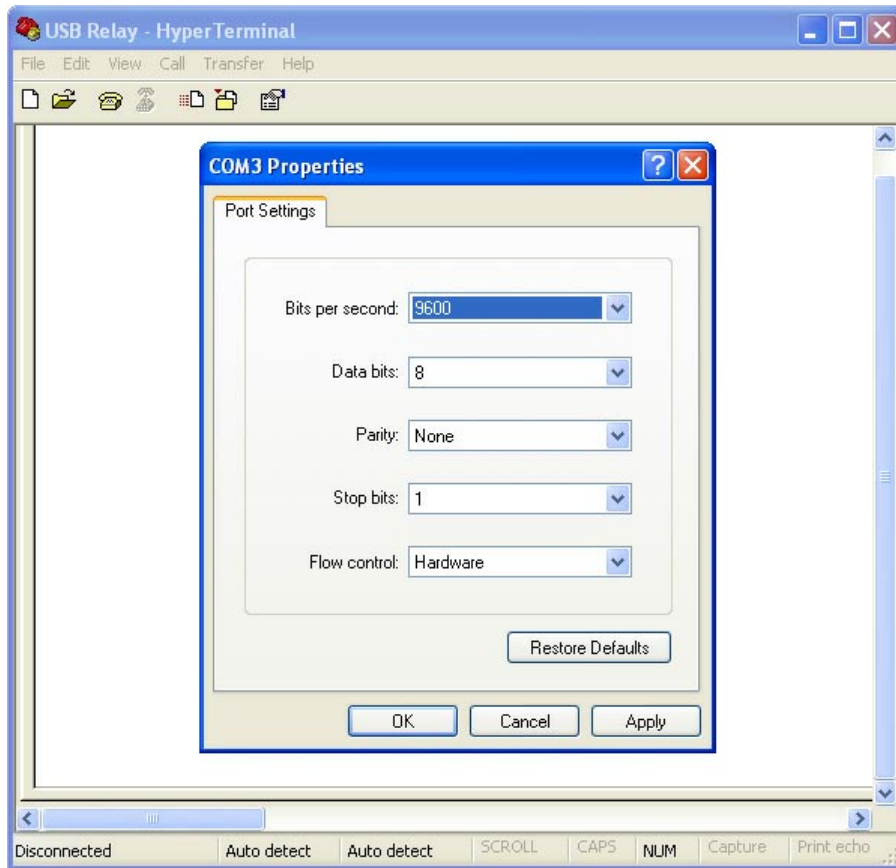
USB Relay Controllers

RS232 Serial controlled



HyperTerminal:





To turn ON first relay:

1. Press key "ALT", type using numbers "0255" and release "ALT"
2. Press key "ALT", type using numbers "0001" and release "ALT"
3. Press key "ALT", type using numbers "0001" and release "ALT"

To turn ON second relay:

1. Press key "ALT", type using numbers "0255" and release "ALT"
2. Press key "ALT", type using numbers "0002" and release "ALT"
3. Press key "ALT", type using numbers "0001" and release "ALT"

BAT files control:

Variant 1

You then need to copy the "off" files to the

C:\WINDOWS\system32\GroupPolicy\Machine\Scripts\Shutdown

folder and the "on" files to

C:\WINDOWS\system32\GroupPolicy\Machine\Scripts\Startup

folder.

Lastly click on C:\WINDOWS\system32\gpedit.msc, click on the computer setting box and then scripts (startup/shutdown) and add the on.bat file to the startup scripts and the off.bat the the shutdown scripts.

Download BAT files (COM3):

http://www.sigma-shop.com/software/usb_relay/command_relay_control.zip

NOTE: You can edit the COM-port of the relay in the .bat files.