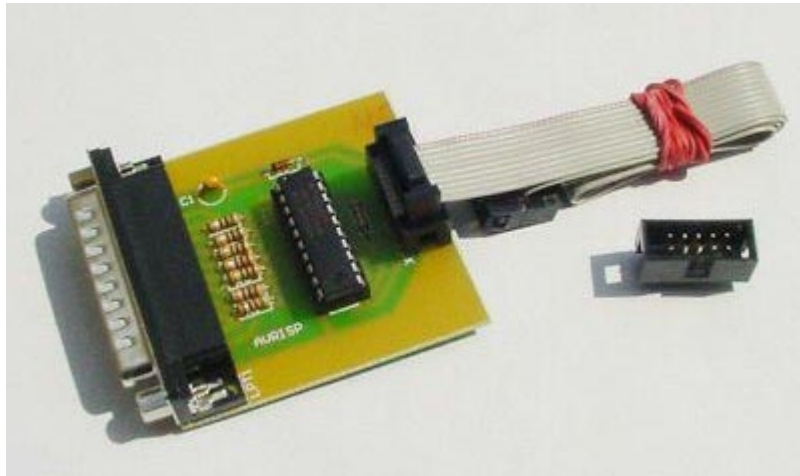


# STK compatible ATMEL AVR programmer

Fully assembled and tested



## **Description :**

It connects to the Parallel port, and can be used to program any Atmel AVR while it is still in the system, provided the system provides a standard In System Programming (ISP) connector. The PC interface is through the Parallel port, and makes use of the same pinout as the STKxxx programmer.

This tool is easy to use In-System Programmer. It is designed to program all AVR flash In-System Programmable microcontrollers through 10-pin KANDA type ISP connector. This programmer uses PonyProg and ATMEL AVR ISP. The ISP Programmer is an excellent tool for fast developing of applications and for in-system upgrade. And there is no need for additional power supply, because the programmer is powered by the target application. Voltage range of the target board is 2.7V to 6V.

## **Appendix : Some "ISP considerations"**

ISP programmer have to override the pin functionality of MOSI, MISO, SCK and RST lines during programming. So if there are external circuitry that could drive these lines, it is a good idea to place on these external circuitry lines series resistors in order to avoid driver contention.

REMARK : If your target board have pulse power supply, it would be smart to connect GND of your computer, GND of your programmer and GND of your target board together.

## **Dimensions:**

5,5 cm x 5,5 cm

## **Power :**

Programmer is powered by the target application.

## Supported Microcontrollers :

- ATtiny11
- ATtiny12
- ATtiny15
- ATtiny22
- ATtiny26
- ATtiny2313
- AT90S1200-4
- AT90S1200-12
- AT90S2313-10
- AT90S2313-4
- AT90S2323
- AT90LS2323
- AT90S2333
- AT90LS2333
- AT90S2343
- AT90LS2343
- AT90S4414-8
- AT90S4414-4
- AT90S4433
- AT90LS4433
- AT90LS4434
- AT90S4434
- AT90S8515-4
- AT90S8515-8
- AT90C8534
- AT90S8535
- AT90LS8535
- ATmega103
- ATmega103L
- ATmega128
- ATmega128L
- ATmega16
- ATmega16L
- ATmega161L
- ATmega161
- ATmega163
- ATmega163L
- ATmega323
- ATmega323L
- ATmega64
- ATmega64L
- ATmega8
- ATmega32
- ATmega8515L
- ATmega8515
- ATmega8535L
- ATmega8535

## Untested :

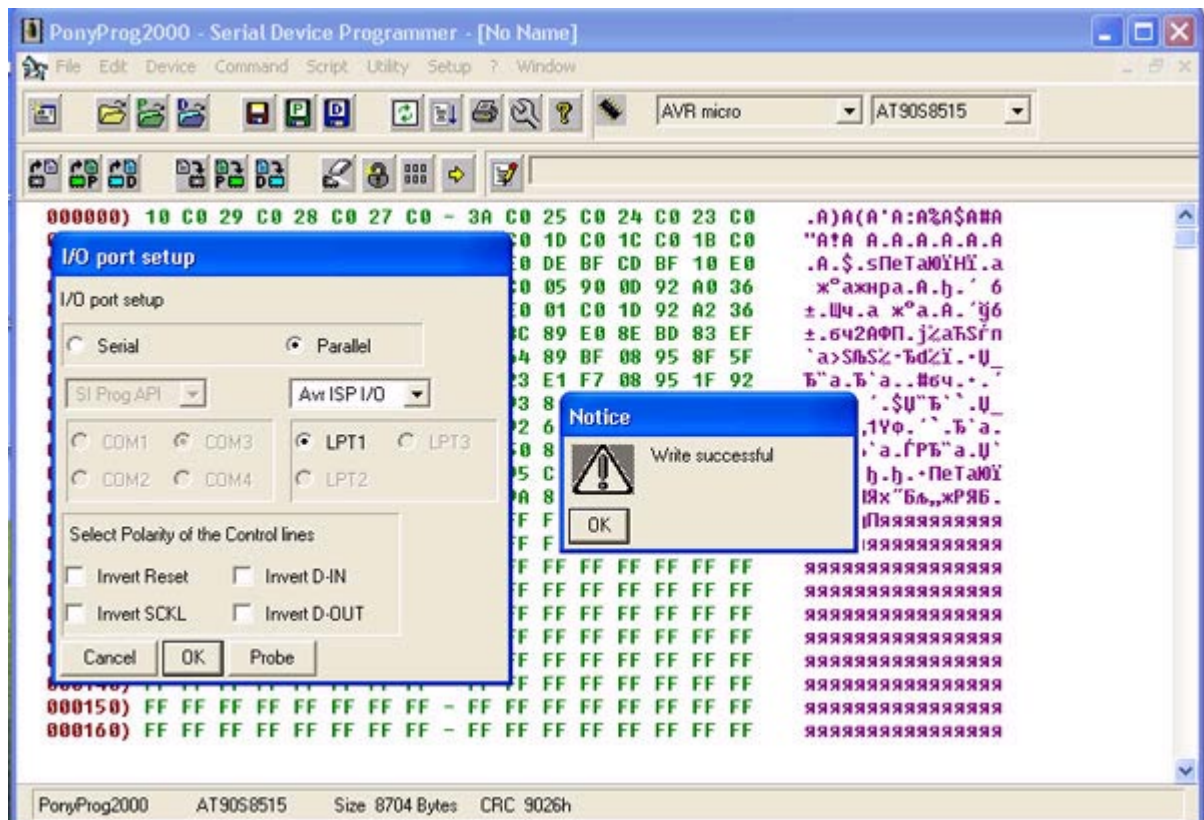
- \* ATmega44, 88, 168, 164, 324, 644, 640,1280, 1281, 2560, 2561
- \* AT90can32, 64, and 128
- \* ATtiny13, 25, 45, 85, 261, 461, and 861

## This programmer works with the following software :

- PonyProg
- AVR Prog
- AVR Assembler
- AVR ISP
- IAR Assembler
- IAR Embedded Workbench
- ImageCraft ICCAVR V6
- ImageCraft ICctiny V6
- GNU avr-gcc
- CodeVisionAVR-Standard
- CodeVisionAVR-Light
- RVK-Basic Compiler
- BASCOM-AVR
- AVRco
- IAR C-SPY Debugger
- FastAVR Basic compiler

**PonyProg :**

<http://www.lancos.com/prog.html>



**10 pin KANDA type connector :**

- MOSI ■ ● VCC
- LED ● ● GND
- RST ● ● GND
- SCK ● ● GND
- MISO ● ● GND