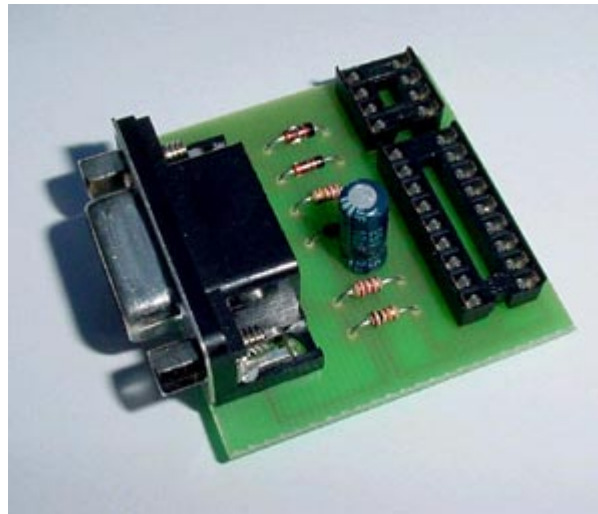


PIC 16F84 + 24CXX Simplified EEprom programmer

(fully assembled and tested)



Info :

It is an unpretentious programmer for the most utilized PIC-processors of Microchip and for the memories of the 24xx series. It does not have the requirements and the abilities of the expensive programmers, but what it offers is a perfect choice for beginners, who are just entering the world of microcontrollers.

List of the schemes, which the programmer can programme

EEPROM's:

24C01	24LC01
24C02	24LC02
24C04	24LC04
24C08	24LC08
24C16	24LC16
24C32	24LC32
24C64/65	24LC64/65
24C128	24LC128
24C256	24LC256
24C512	24LC512

PIC microcontrollers:

PIC 16C84, PIC 16F84, PIC 16F84A

Dimension :

40 x 40 mm

Supply :

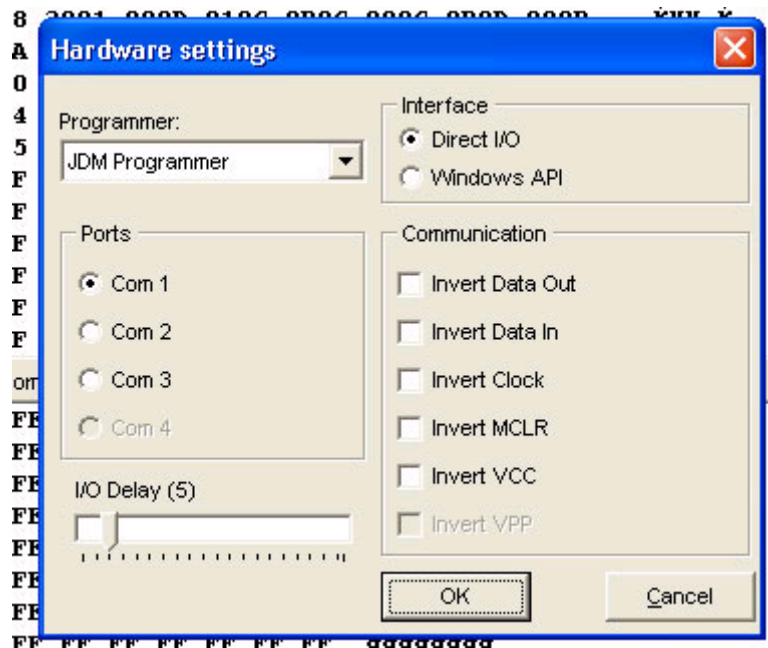
The programmer is electrically supplied by the serial port of your PC and it does not need any external power supply.

Software :

ICprog and PonyProg compatible - hardware 'JDM programmer'. It works under Windows XP.

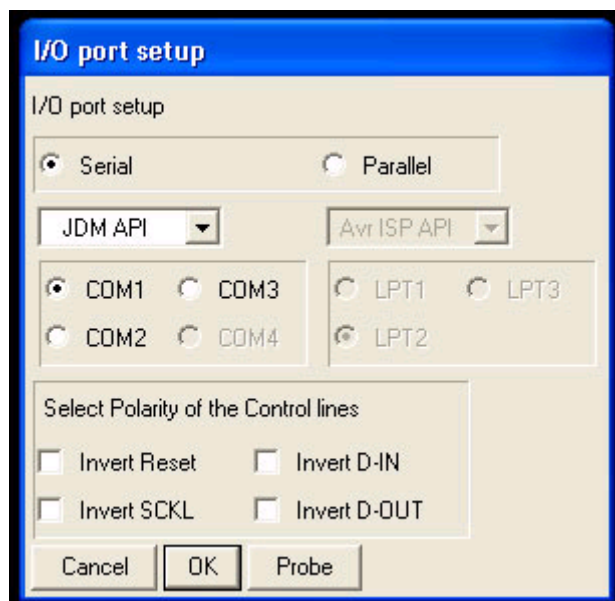
ICprog :

<http://www.ic-prog.com>

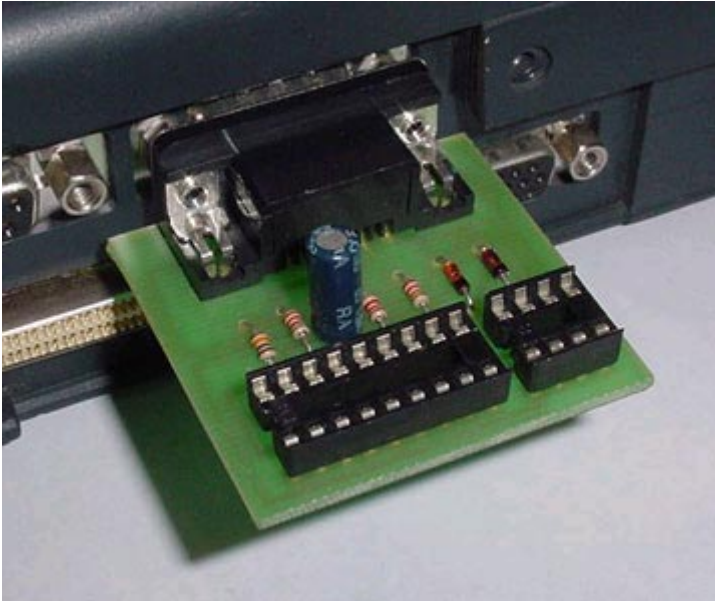


PonyProg :

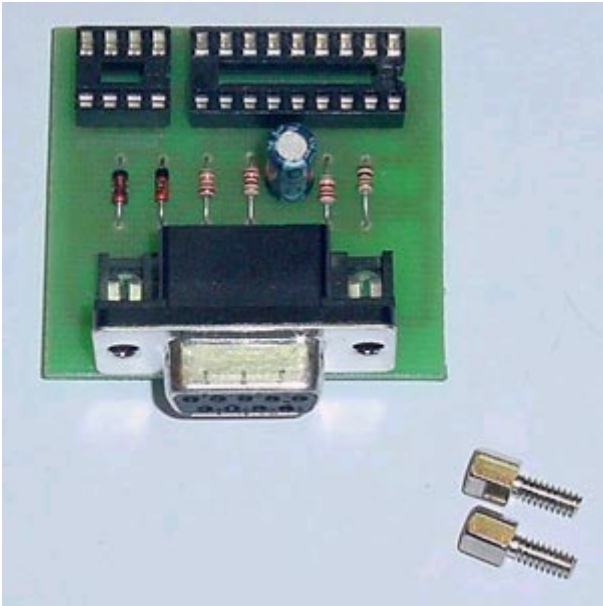
<http://www.lancos.com/prog.html>



Directly connected to the serial port of your PC :



To connect directly to PC you must unwind two bolts programmer's connector :



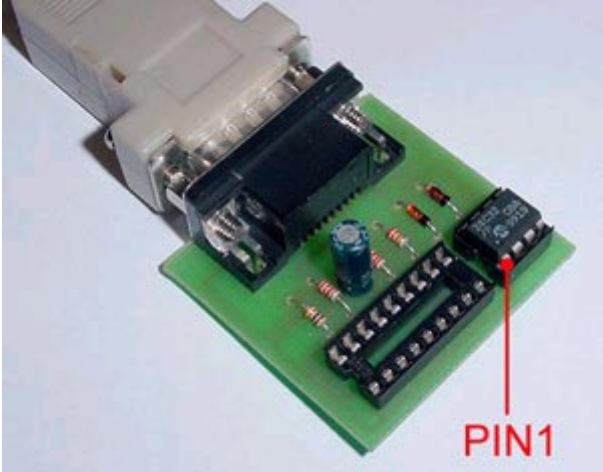
Or by a prolongue 9pin male/female cable:



PIC16F84 programming :

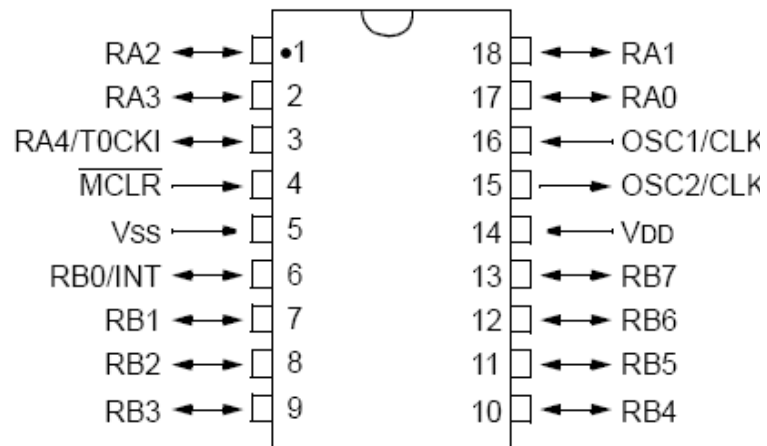


Easy to read, program and edit the 24xxx series memories (EEPROMs) - the most widely spread memory type :



Pin Diagrams

PIC16F84



24C/LCxxx

