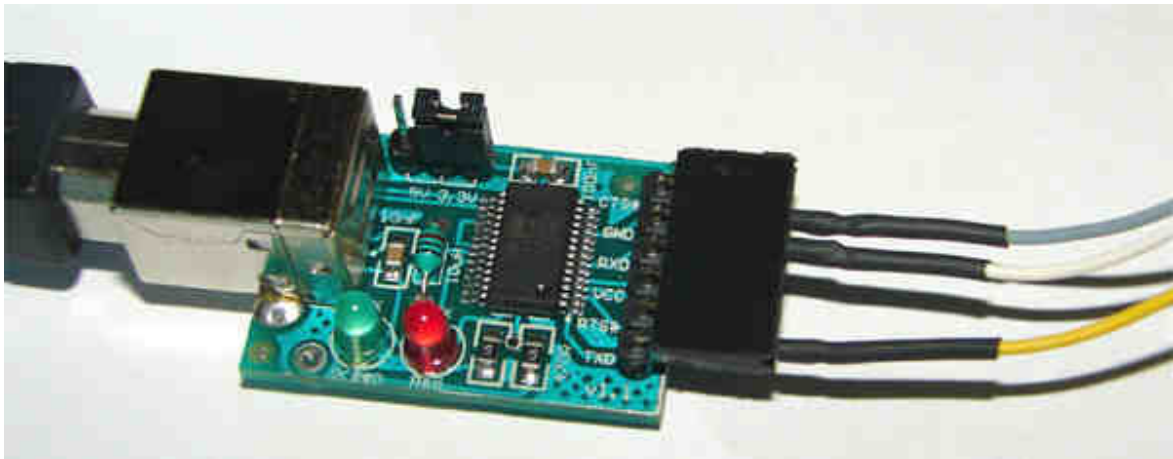


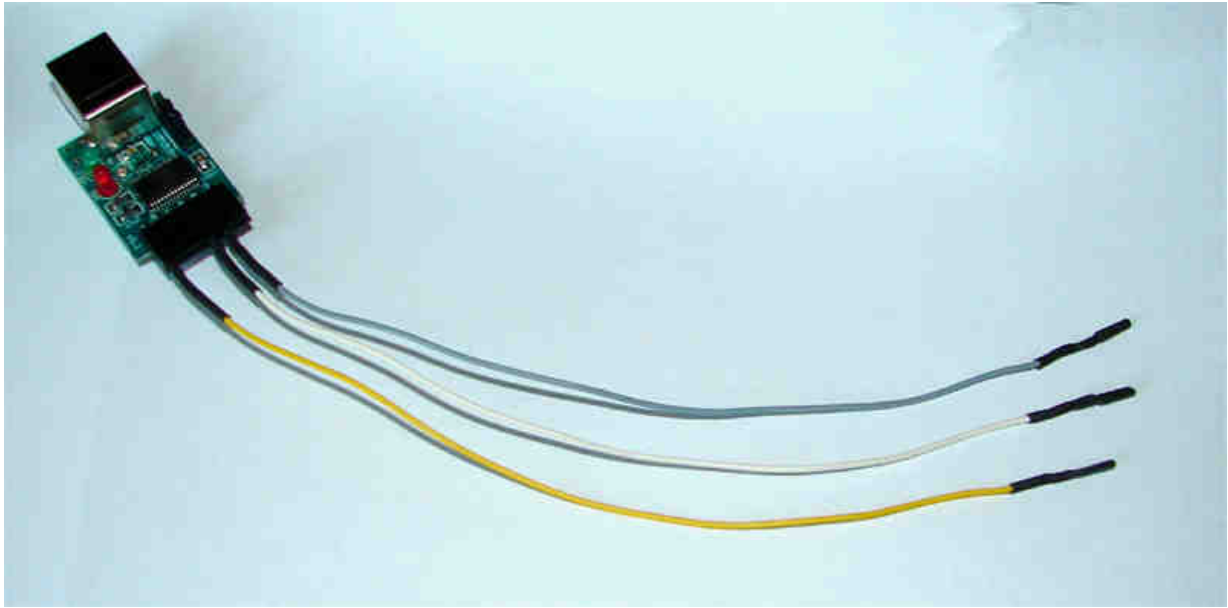
Barracuda Seagate Fix tool

This device will help you to fix LBA or BSY error on Seagate Barracuda.

There are two common errors on Seagate 7200.11 HDDs (caused by bugs on firmware):

- 0 LBA error: it happens when your BIOS can recognize your HDD at POST moment, but as an 0MB drive.
- BSY error: it happens when your HDD enter on a halt state, or BuSY state. In this condition, your HDD will not be recognized by BIOS at POST moment.



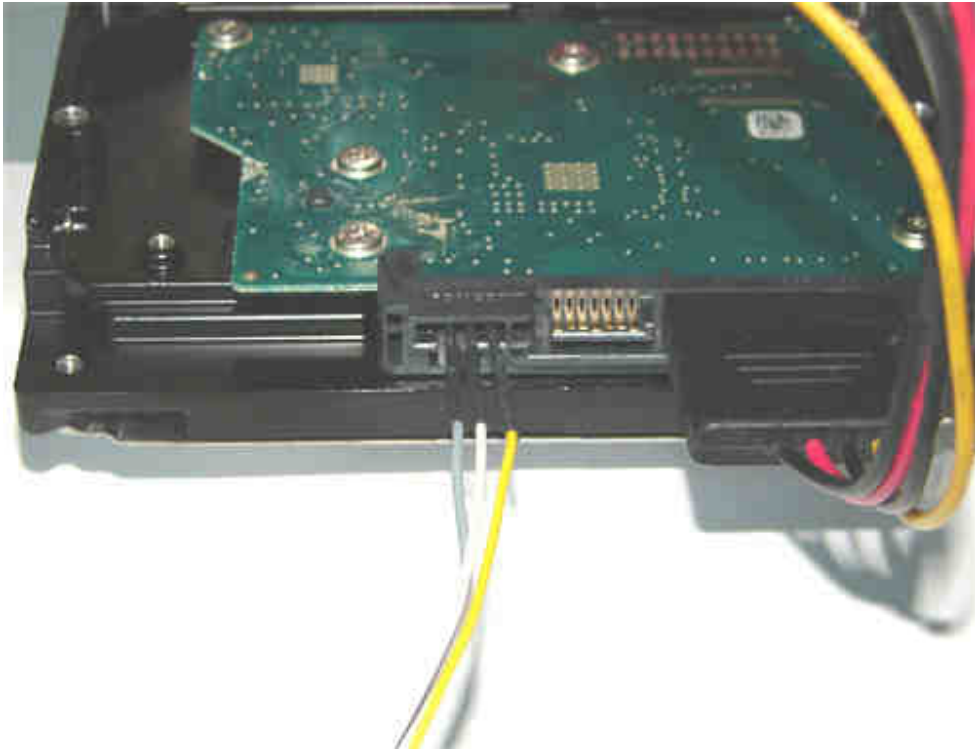


Connect the cables just like on the picture below:

TX of the module <-> RX of the Hard Drive

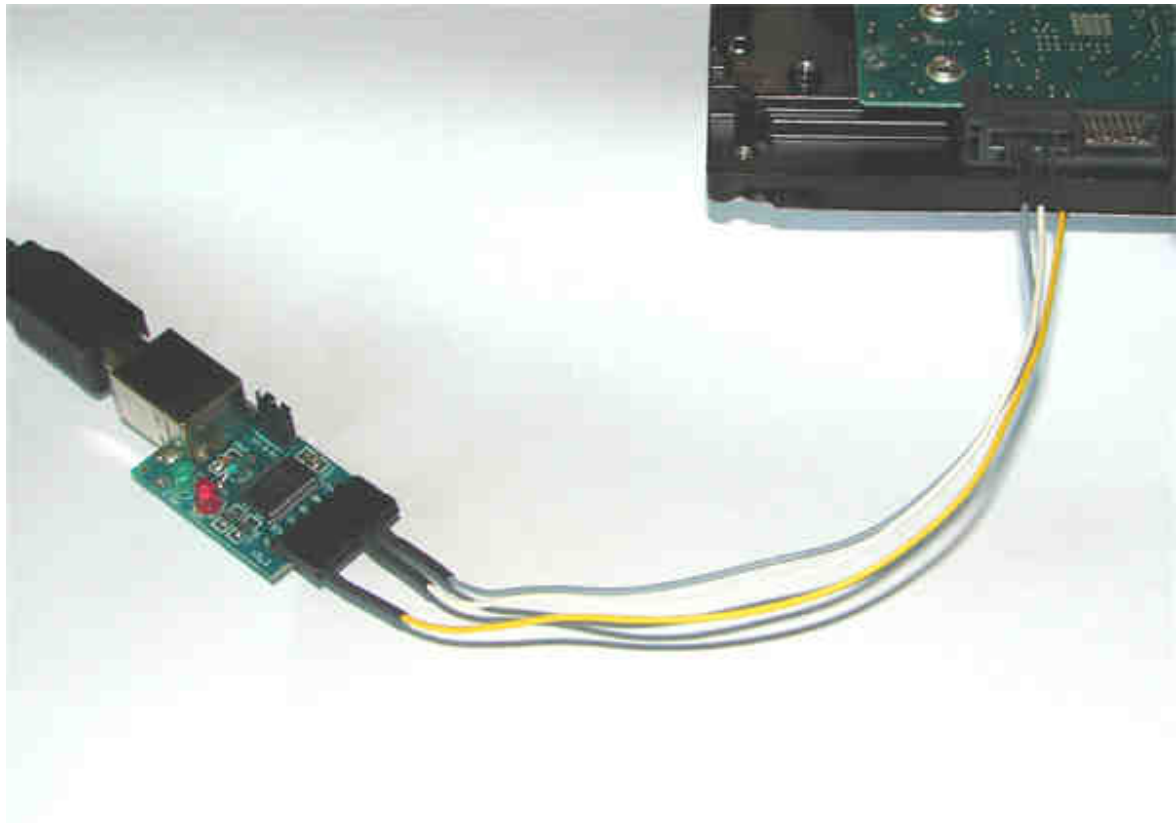
RX of the module <-> TX of the Hard Drive



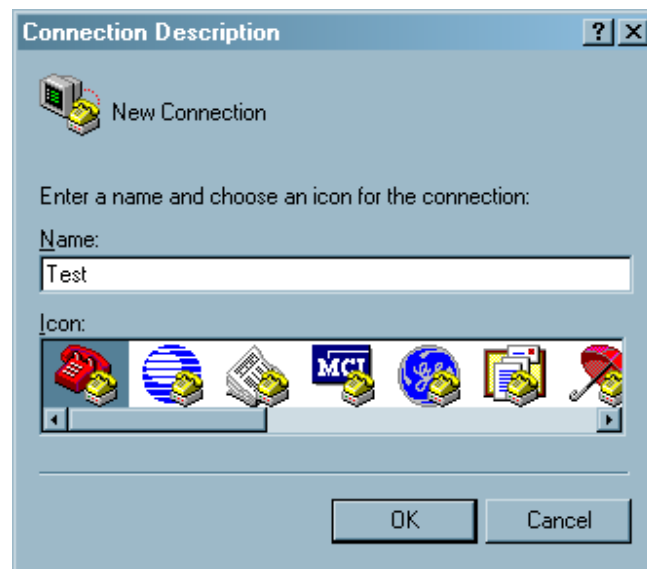


Connect the module to the computer. If drivers are needed download at:

<http://www.ftdichip.com/Drivers/VCP.htm>



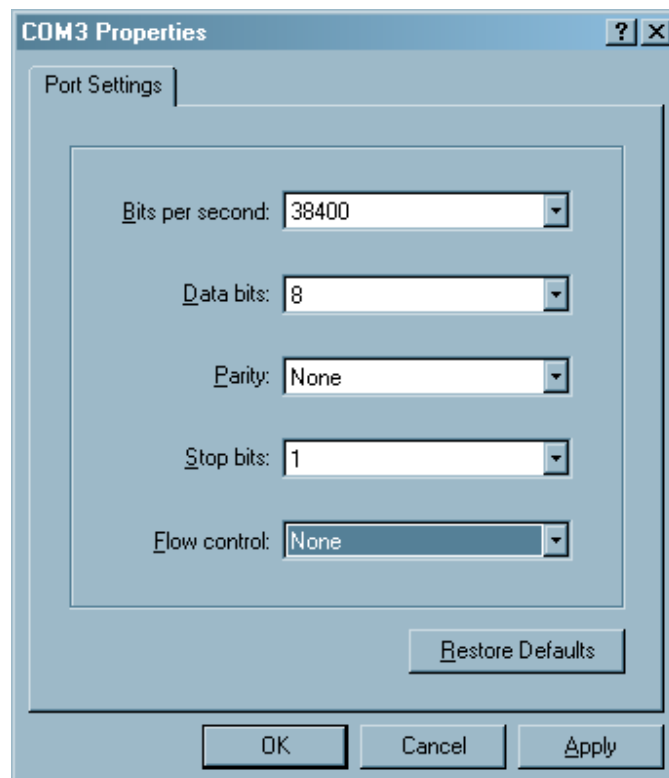
Now run the HyperTerminal or other software and configure like the pictures below.



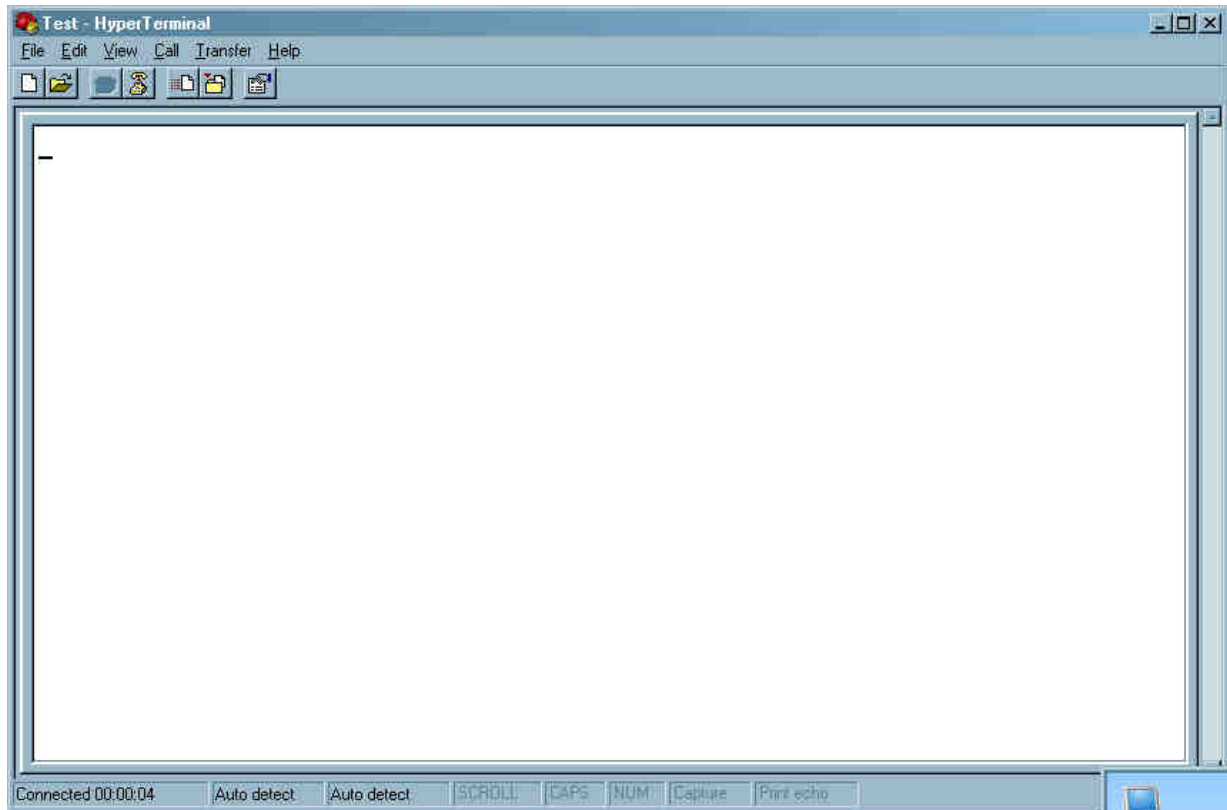
Choose the correct COM port where the FTDI module is connected
(in this case COM3)



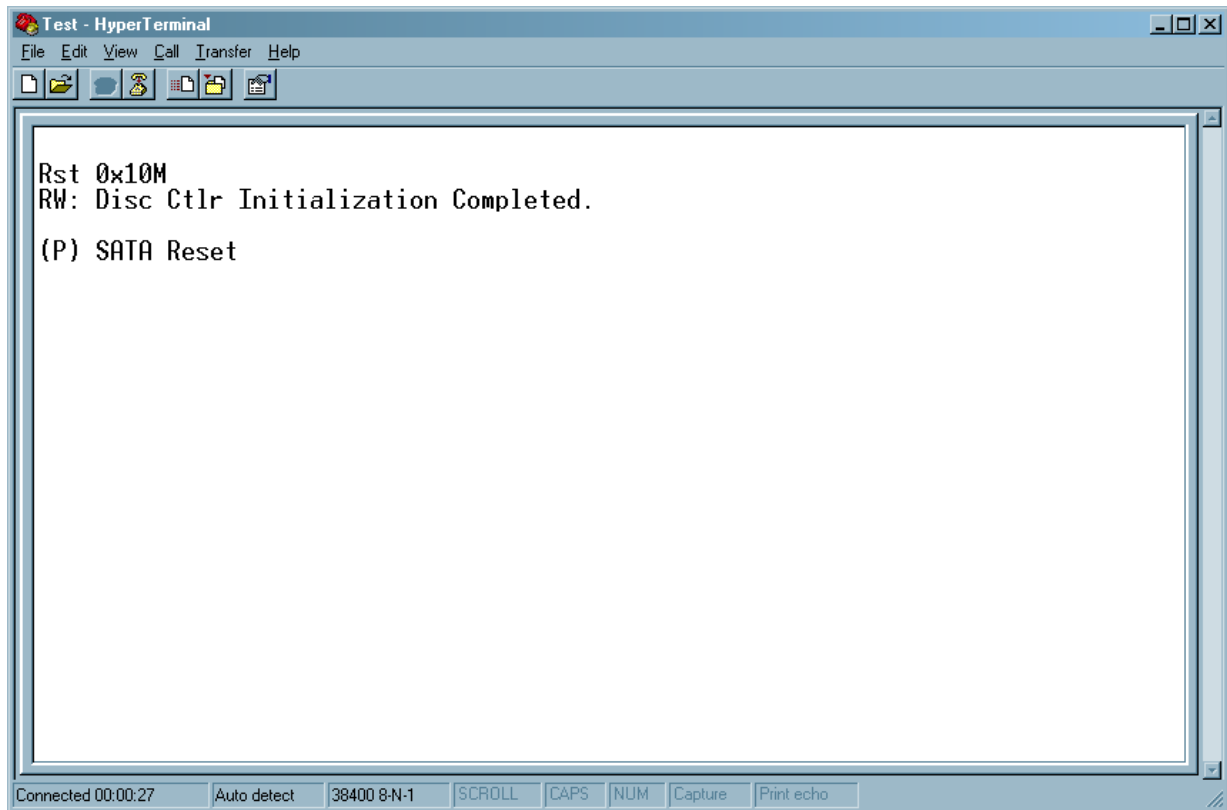
Configure with these parameters:



OK, now you are ready to power up the HardDisk. Connect the power cable and wait.



When power is applied you have to see this:



More information about how to make it work:

<http://www.msfm.org/board/topic/128807-the-solution-for-seagate-720011-hdds/>