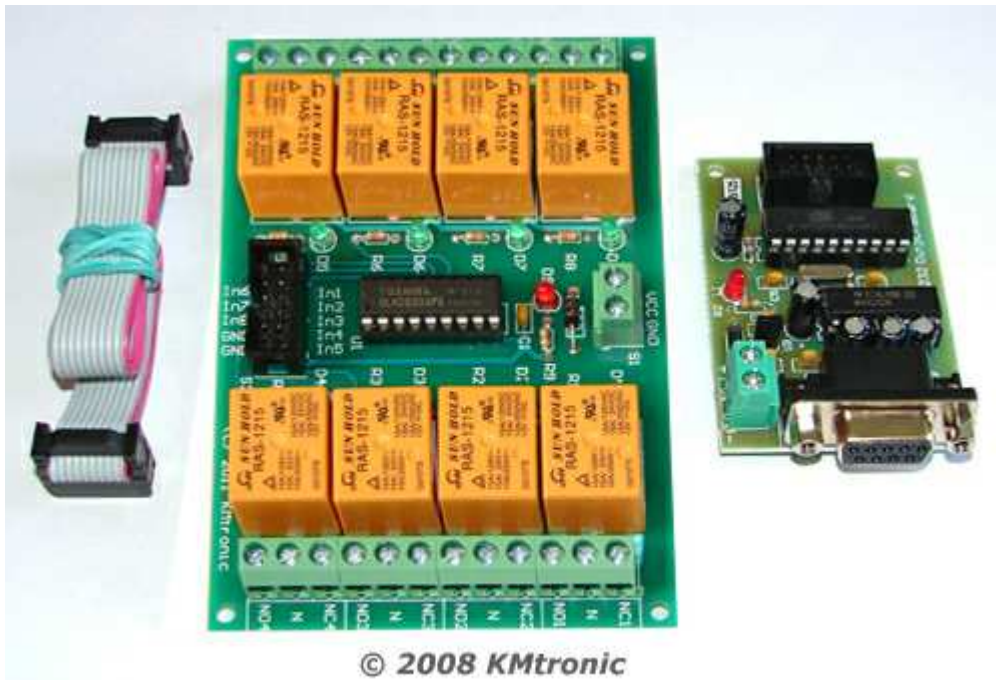


# RS232 Serial COM controlled Eight Channel Relay Board 12Volts



## Description :

Control up to 8 devices via PC RS232 COM port. There are 8 relays each capable of switching 12VDC/15A or 240VAC/10A. Each relay has an LED to indicate when it is operated.

For 12V/24V DC 15A or 120V/220V AC at 10A max.

The set includes:

- One RS232 control board
- One assembled and tested relay's board
- One 10 PIN flat cable (approximately length 30cm)

## Specifications :

Relays has Normally Open (NO) and Normally Closed (NC) Contacts rated for voltages:

- 12VDC/15A
- 24VDC/15A
- 125VAC/15A
- 250VAC/10A

Relay's datasheed :

(relays used : RAS-1215 - 1C)

<http://www.sigma-shop.com/information/Relay/RAS.pdf>

Dimensions :

Relay board : 120mm / 80mm / 20mm

RS232 board : 40 mm / 60 mm

Communication Parameters :

8 Data, 1 Stop, No Parity

Baud rate : 9600

FIRST chanel commands :

"FF 01 00" - OFF command

"FF 01 01" - ON command

...

...

...

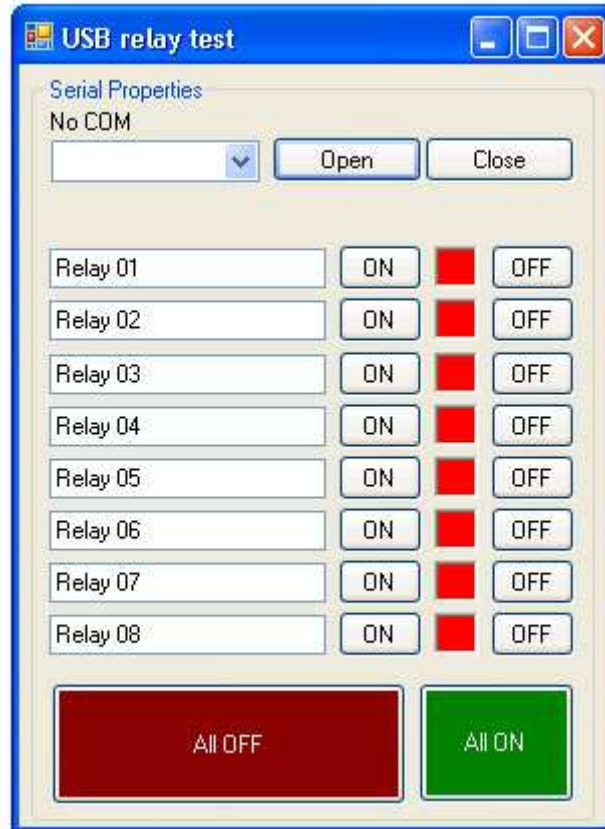
EIGHT chanel commands :

"FF 08 00" - OFF command

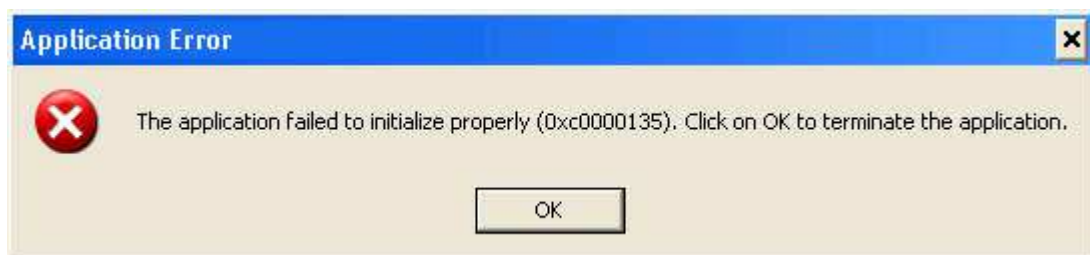
"FF 08 01" - ON command

## Testing :

1. Download "USBRelay\_test.exe" from :  
[http://www.sigma-shop.com/information/USB\\_Relay/USBRelay\\_test.exe](http://www.sigma-shop.com/information/USB_Relay/USBRelay_test.exe)
2. Connect board to USB and run software.  
If everything is ok this should appear :



If you get this message you see the following error :



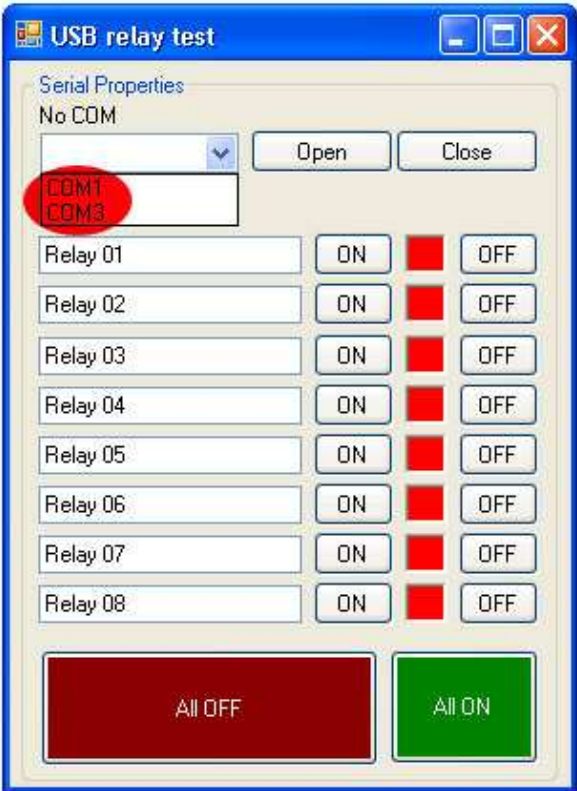
that means that you do not have the latest version of Microsoft .NET Framework installed on your computer.

The program has to be installed on your computer in order to use the software.

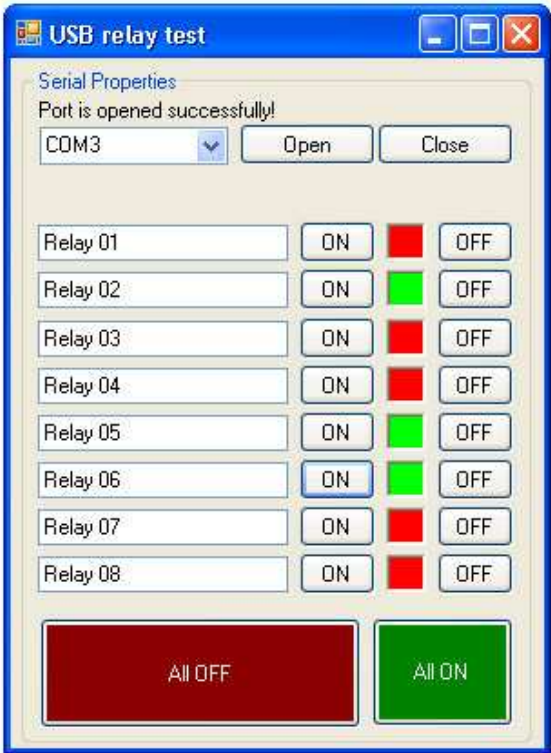
You can download this from [there](#)

<http://www.microsoft.com/downloads/details.aspx?FamilyId=333325FD-AE52-4E35-B531-508D977D32A6&displaylang=en>

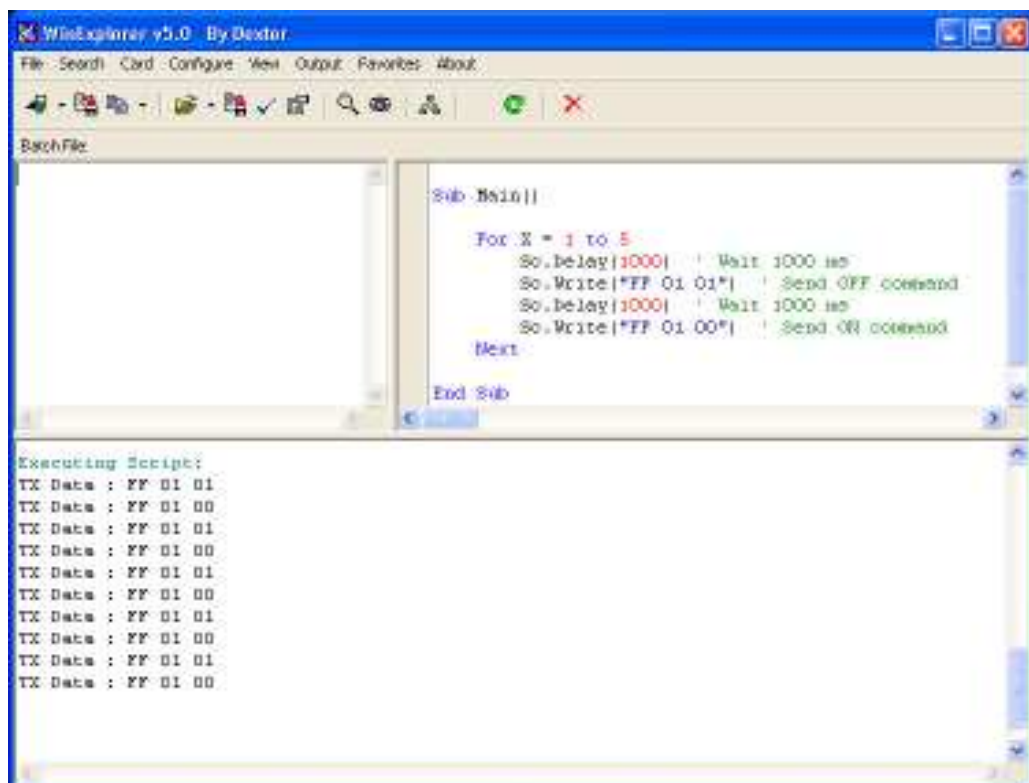
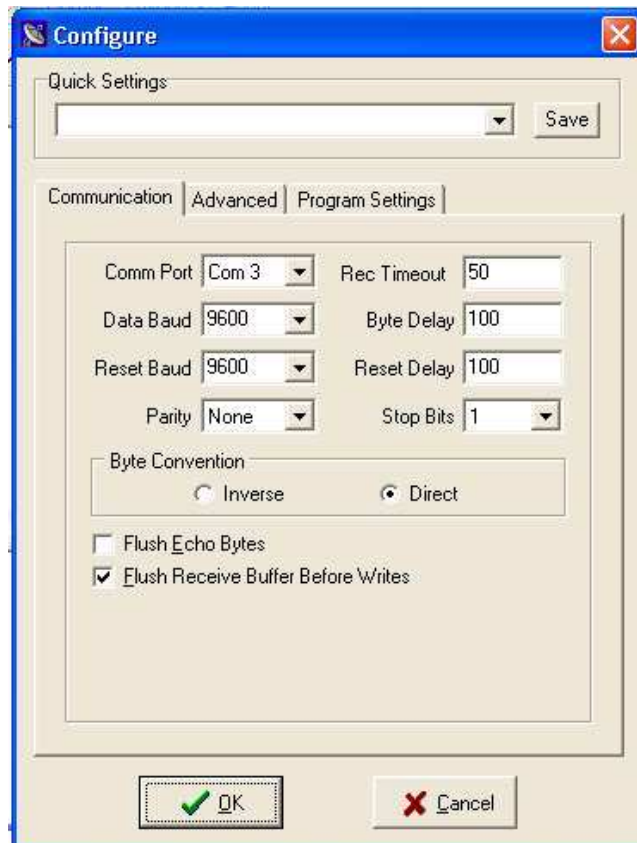
3. Software will detect all COM ports you have :



4. Choose COM port. Click on "OPEN" button and using "ON" and "OFF" buttons you can test relays.



WinExplorer :



[http://www.sigma-shop.com/information/USB\\_Relay/WinExp.zip](http://www.sigma-shop.com/information/USB_Relay/WinExp.zip)

[http://www.sigma-shop.com/information/USB\\_Relay/USB\\_8Relay\\_test.Xvb](http://www.sigma-shop.com/information/USB_Relay/USB_8Relay_test.Xvb)

### **Sample VB6 code :**

```
Private Sub cmdOff_Click()  
With MSComm1  
'make sure the serial port is open  
If .PortOpen = False Then .PortOpen = True  
'send the data  
.Output = Chr$(255)  
.Output = Chr$(1)  
.Output = Chr$(0)  
End With 'MSComm1  
End Sub
```

```
Private Sub cmdOn_Click()  
With MSComm1  
'make sure the serial port is open  
If .PortOpen = False Then .PortOpen = True  
'send the data  
.Output = Chr$(255)  
.Output = Chr$(1)  
.Output = Chr$(1)  
End With 'MSComm1  
End Sub
```

### **Sample C# code :**

```
private void button1_ON_Click(object sender, EventArgs e)  
{  
    serialPort1.Write(new byte[] { 0xFF, 0x01, 0x01 }, 0, 3);  
}  
  
private void button1_OFF_Click(object sender, EventArgs e)  
{  
    serialPort1.Write(new byte[] { 0xFF, 0x01, 0x00 }, 0, 3);  
}
```