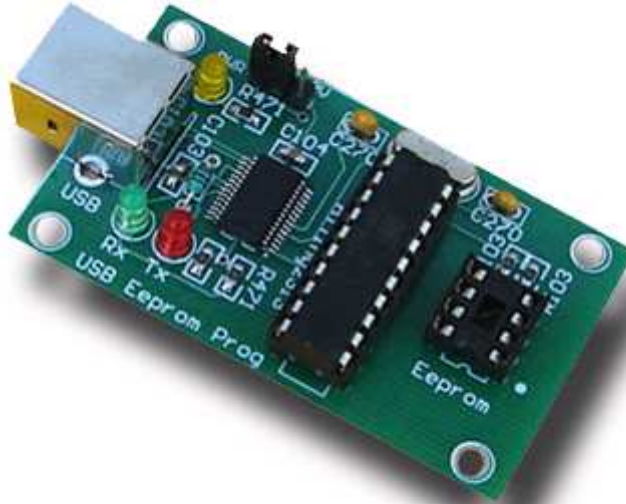


USB 25xxx SPI EEprom programmer

Fully assembled and tested



Description :

It is an unpretentious USB programmer for the memories of the 25xxx SPI series. The programmer is electrically supplied from the USB port.

Dimensions:

6 cm x 3.5 cm

Supply :

The programmer uses supply from the serial port and does not need external.

Tested with memories producent :

Microchip, ATMEL, ST.

Read-Write time :

25xx320 - approximate 15 sec.

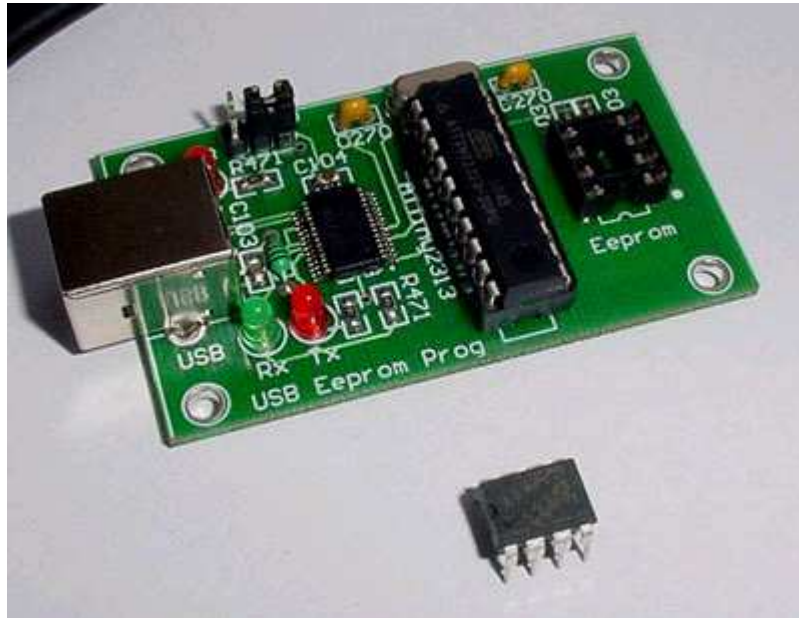
25xx512 - approximate 240 sec. (4 min.)

Software :

Free, included in complete. Works under Windows 98, 2000, XP, Vista.

Complete includes :

- USB programmer
- Software
- USB cable



SMD mounted EEPROM's :

This programmer can be easily adapted to work with SMD mounted EEPROM using one 8 PIN socket and several finely wires.

**Disclaimer :**

In no event the author will be liable to you for damages, including any general, special, incidental or consequential damages arising out of the use or inability to use the program (including but not limited to loss of data or data being rendered inaccurate or losses sustained by you or third parties or a failure of the program to operate with any other programs), even if such holder or other party has been advised of the possibility of such damages.

List of devices which programmer supports :

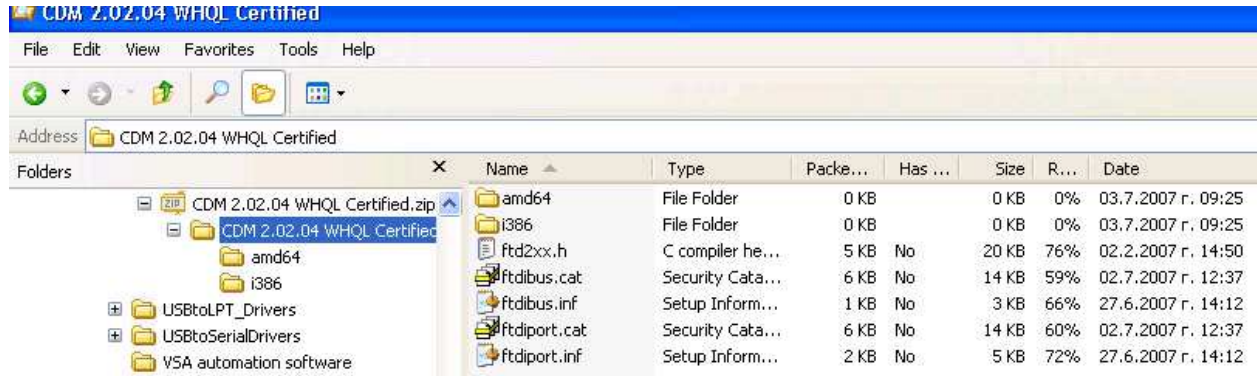
25AA010A	25C320
25LC010A	25AA320
	25AA320A
25AA020A	25LC320
25LC020A	25LC320A
25C040	25AA640
25AA040	25AA640A
25AA040A	25LC640
25LC040	25LC640A
25LC040A	
	25AA128
25C080	25LC128
25AA080	
25AA080A	25AA256
25AA080B	25LC256
25LC080	
25LC080A	25AA512
25LC080B	25LC512
25C160	25AA1024
25AA160	25LC1024
25AA160A	
25AA160B	
25LC160	
25LC160A	
25LC160B	

Drivers and software instalation :

First you have to download the drivers from here:

<http://www.ftdichip.com/Drivers/CDM/CDM%202.04.06%20WHQL%20Certified.zip>

Unzip it to your own folder

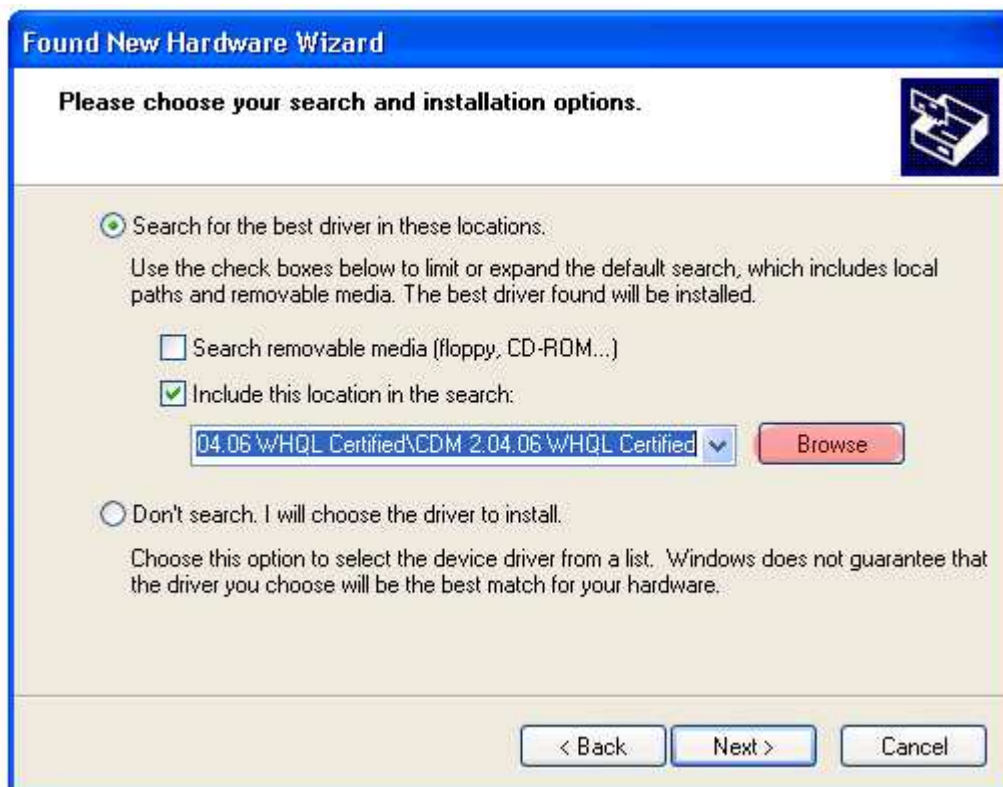


When you connect the programmer, the following message appears: FOUND NEW HARDWARE and drives need to be installed.

When you connect the programmer to the PC the red and green LED flashes 2,3 times and turn off. When the red LED and the green LED flashes means that there is a communication between the programmer and PC.

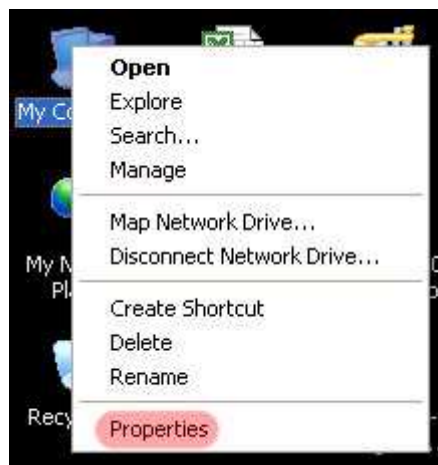
1. Drivers' installation:

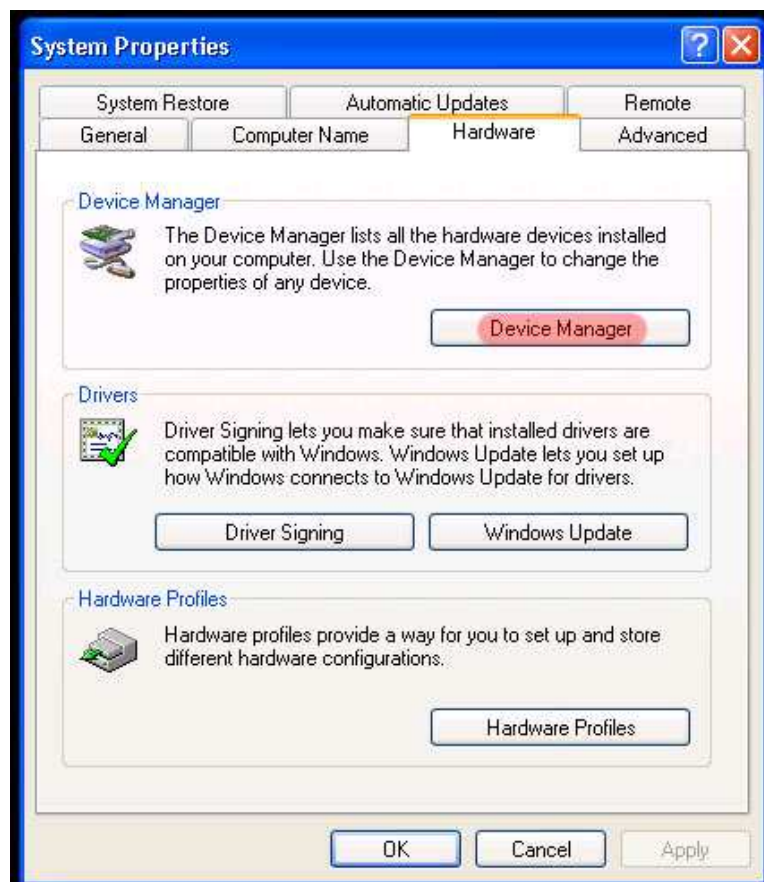


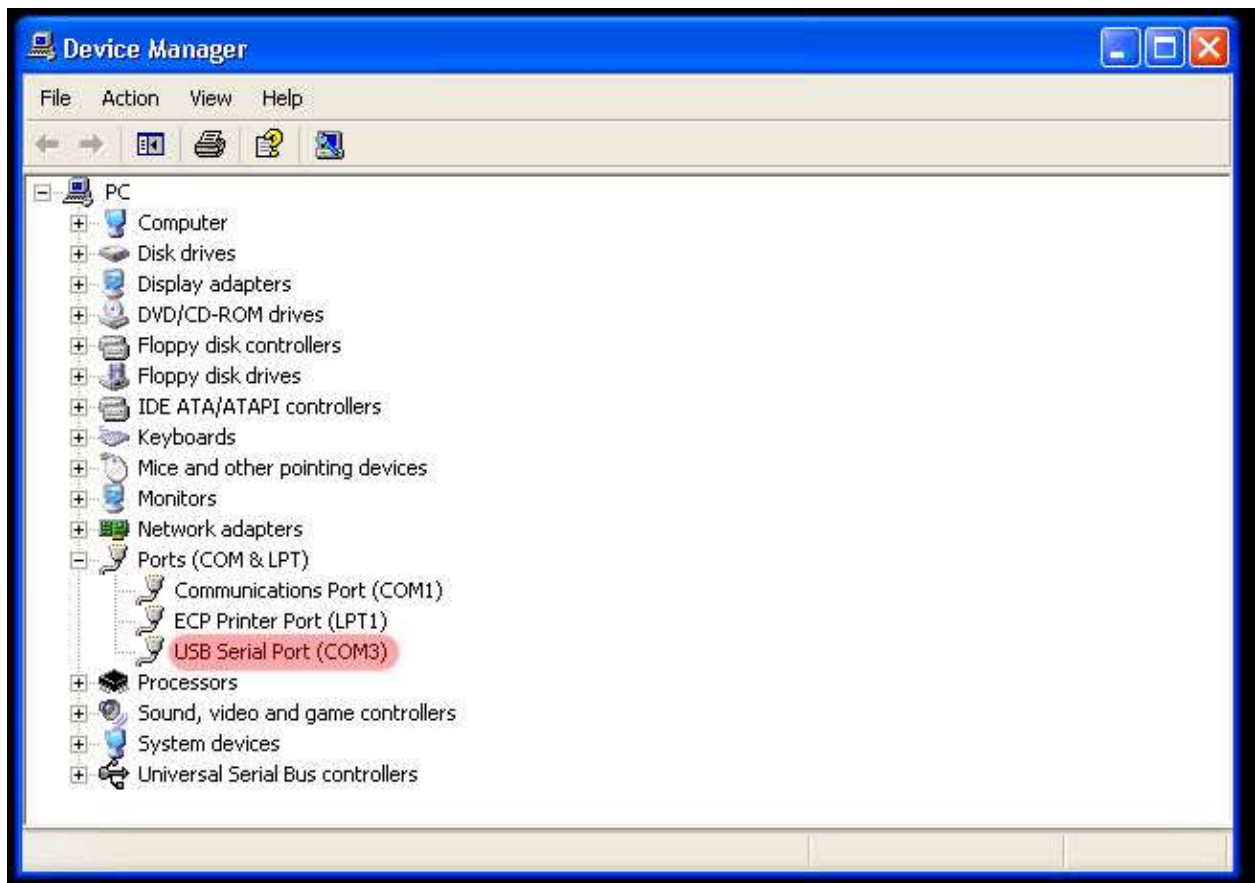




After the drivers' installed, an additional COM port appears in the Device Manager of Windows- usually it is COM3 :

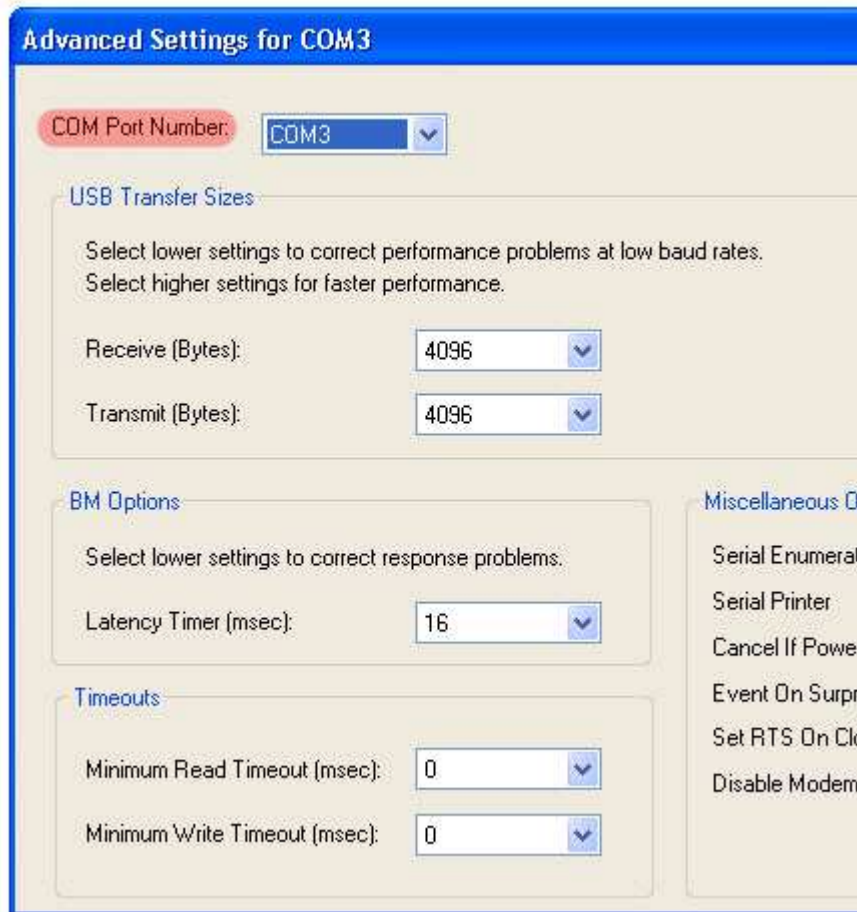






Windows allow you to change the number of the COM port, where the programmer is connected.





Drivers' installation finishes with those steps.

3. Download the latest version of software KEEProg_25xxx from : <http://www.sigma-shop.com/KEEProg/software/>

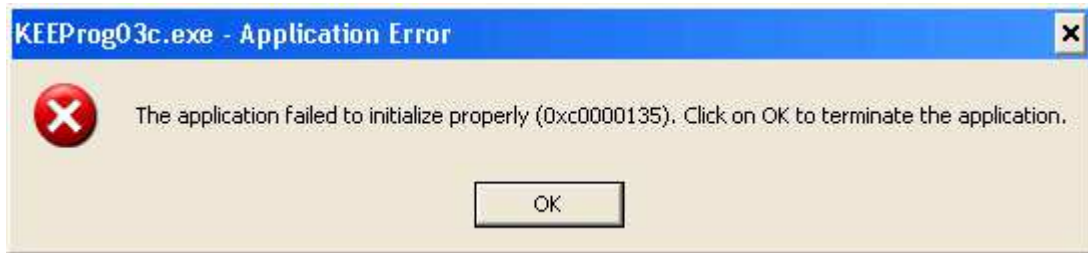
Unzip it to your own folder

Then start the software : KEEProg.exe

If everything is ok this message should appear:



If you get this message you see the following error :

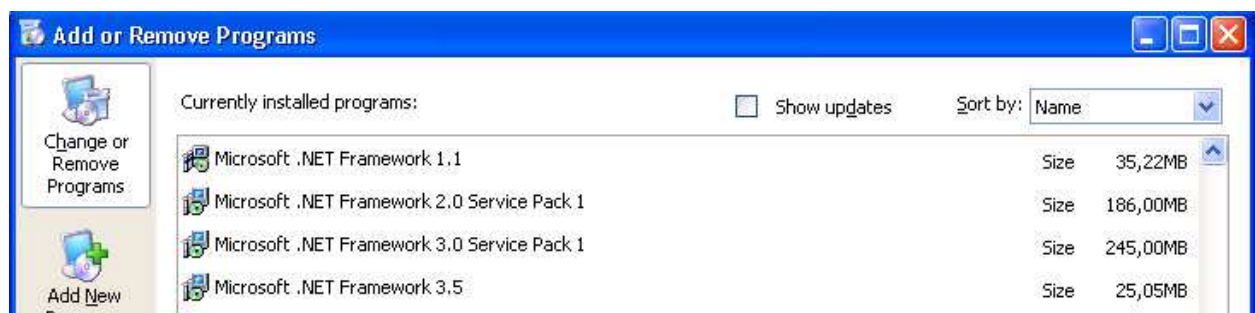


that means that you do not have the latest version of Microsoft .NET Framework installed on your computer.

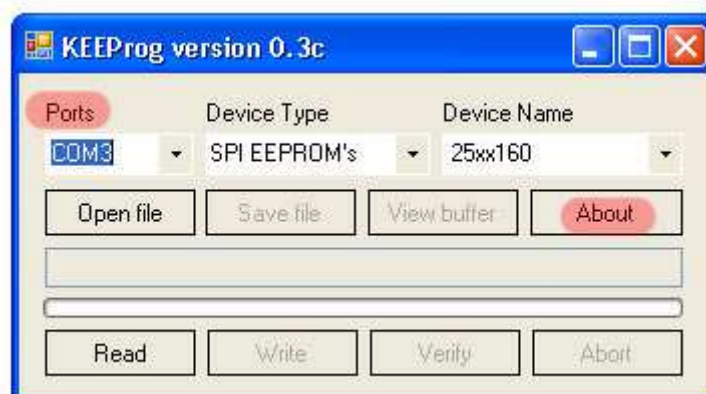
The program has to be installed on your computer in order to use the programmer.

You can download this from :

<http://www.microsoft.com/downloads/details.aspx?FamilyId=333325FD-AE52-4E35-B531-508D977D32A6&displaylang=en>



When you start the software it automatically recognizes the COM port.



When you click on about the version of the programmer, the following appears - KEEProg 25xx 1.0.



If something is wrong with the installation then nothing appears in these fields.

