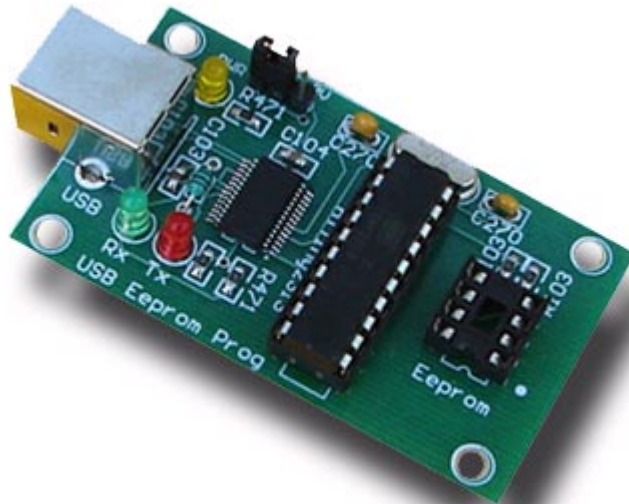


# USB 24xxx I2C E-Eprom programmer

Fully assembled and tested



## Description :

It is an unpretentious USB programmer for the memories of the 24xxx series. The programmer is electrically supplied from the USB port.

Dimensions:  
6 cm x 3.5 cm

## Supply :

The programmer uses supply from the serial port and does not need external.

Tested with memories producent :  
Microchip, ATMEL, ST.

## Read-Write time :

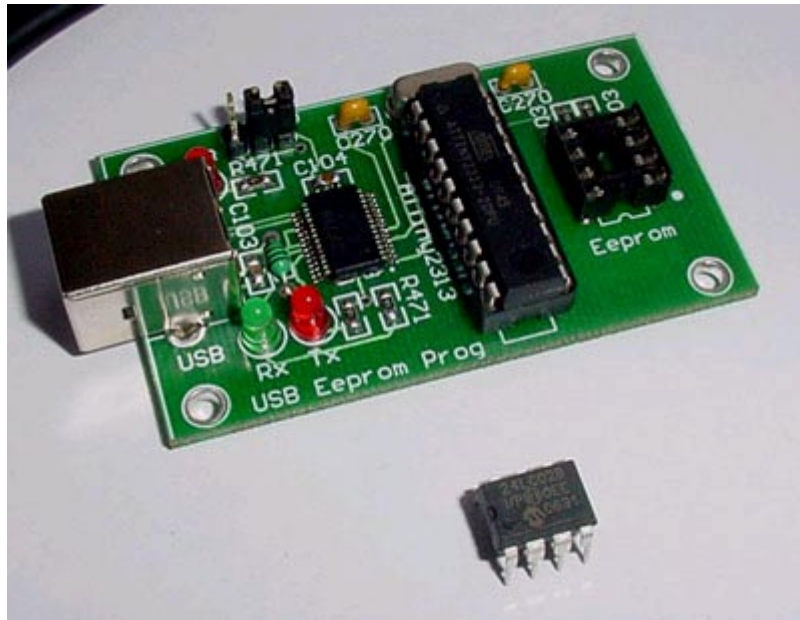
24xx32 - approximate 15 sec.  
24xx512 - approximate 240 sec. (4 min.)

## Software :

Free, included in complete. Works under Windows 98, 2000, XP, Vista.

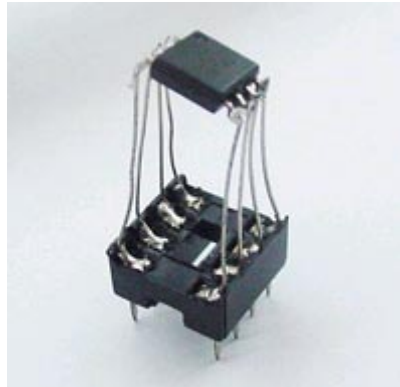
Complete includes :

- USB programmer
- Software
- USB cable



SMD mounted EEPROM's :

This programmer can be easily adapted to work with SMD mounted EEPROM using one 8 PIN socket and several finely wires.



Disclaimer :

In no event the author will be liable to you for damages, including any general, special, incidental or consequential damages arising out of the use or inability to use the program (including but not limited to loss of data or data being rendered inaccurate or losses sustained by you or third parties or a failure of the program to operate with any other programs), even if such holder or other party has been advised of the possibility of such damages.

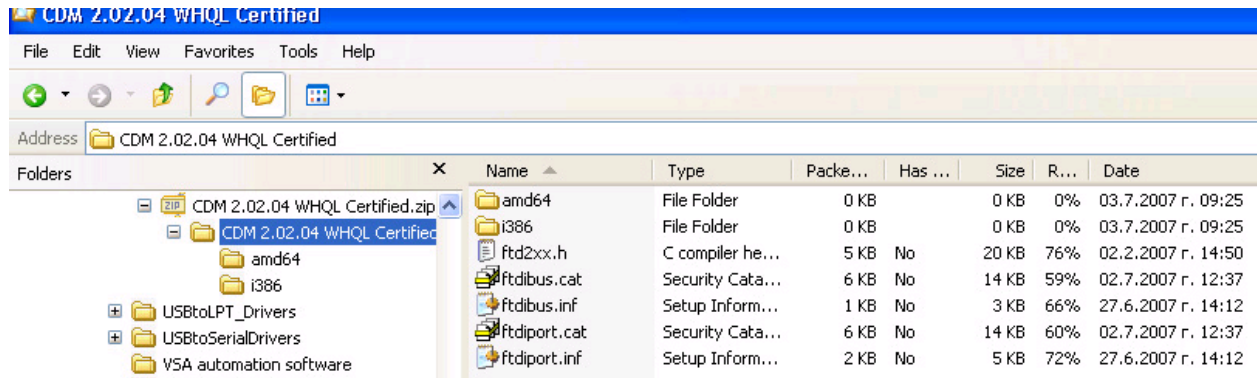
List of devices which programmer supports :

24C00	24C32
24AA00	24LC32A
24LC00	24AA32A
24C01	
24C01C	24AA52
24AA01	24LCS52
24LC01B	
	24C64
24AA014	24LC64
24LC014	24AA64
	24FC64
24C02	
24C02C	24C65
24AA02	24LC65
24LC02B	24AA65
24AA024	24C128
24LC024	24AA128
	24LC128
24AA025	24FC128
24LC025	
	24C256
24C04	24LC256
24AA04	24AA256
24LC04B	24FC256
24C08	24C512
24AA08	24AA512
24LC08B	24LC512
	24FC512
24C16	
24AA16	24AA515
24LC16B	24LC515
	24FC515
24LC21	
24LC21A	24C1024
24LCS21A	24LC1024
24LC22A	24AA1025
24LCS22A	24FC1025
	24LC1025

Drivers and software instalation :

First you have to download the drivers from here:  
<http://www.ftdichip.com/Drivers/VCP.htm>

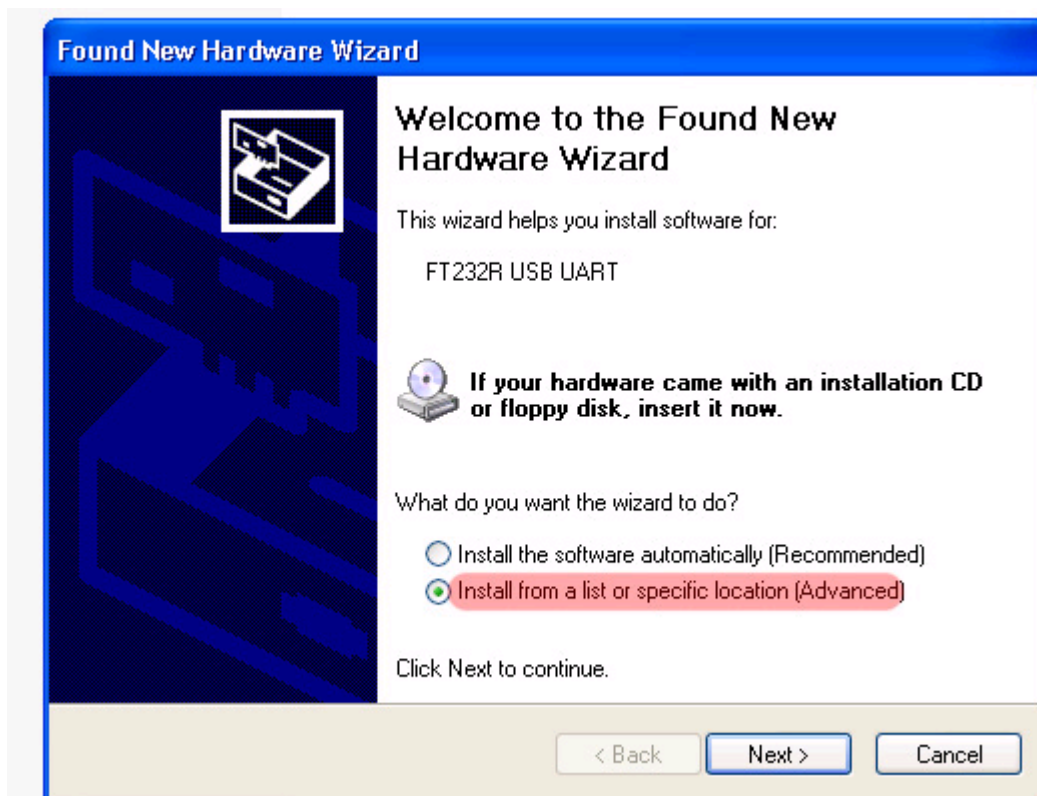
Unzip it to your own folder .....



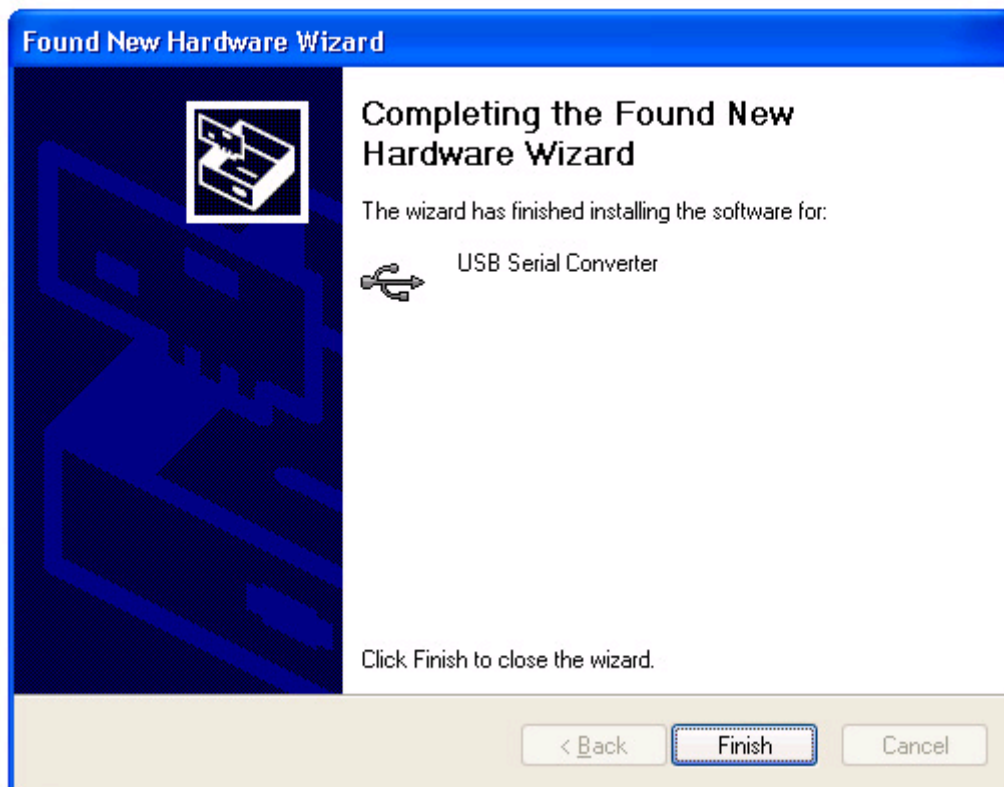
When you connect the programmer, the following message appears: FOUND NEW HARDWARE and drives need to be installed.

When you connect the programmer to the PC the red and green LED flashes 2,3 times and turn off. When the red LED and the green LED flashes means that there is a communication between the programmer and PC.

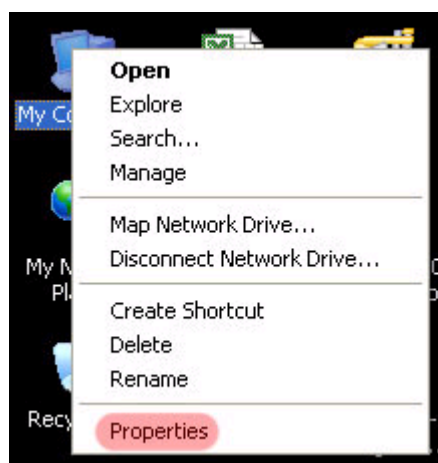
1. Drivers' installation:

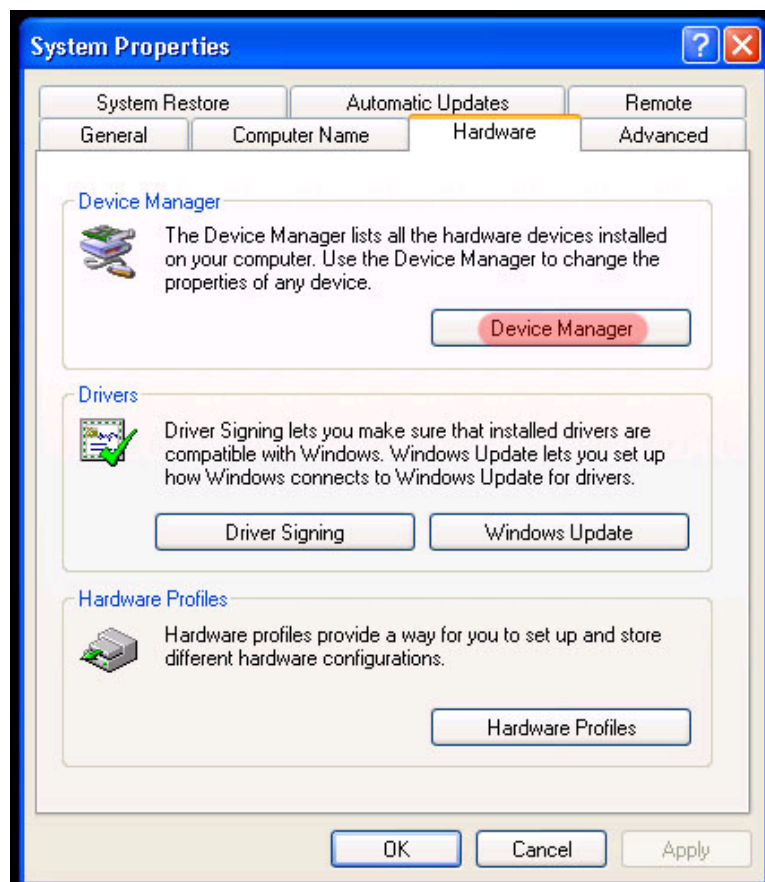
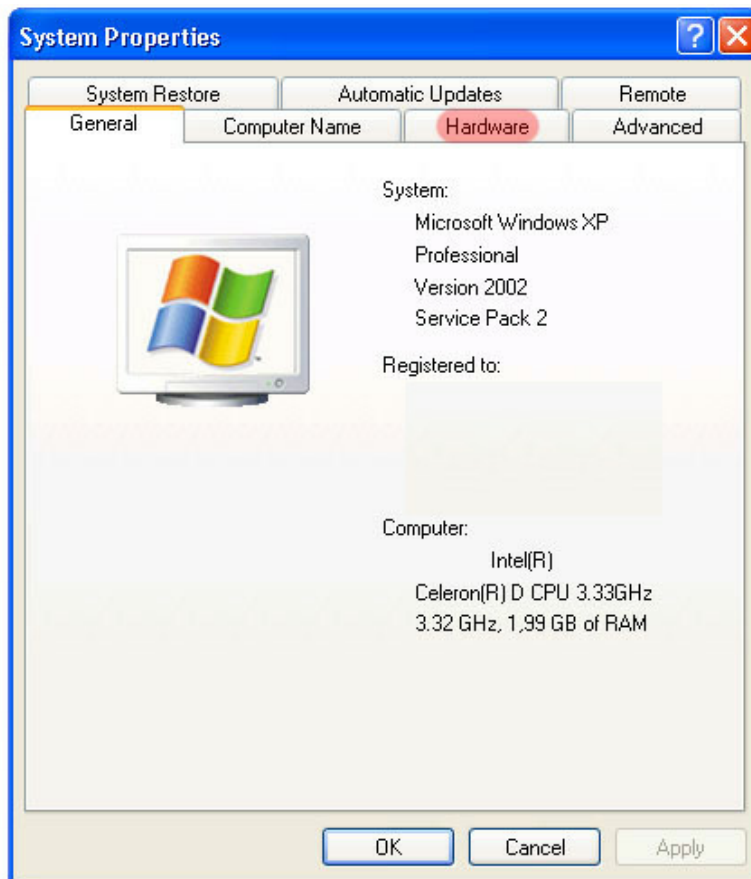




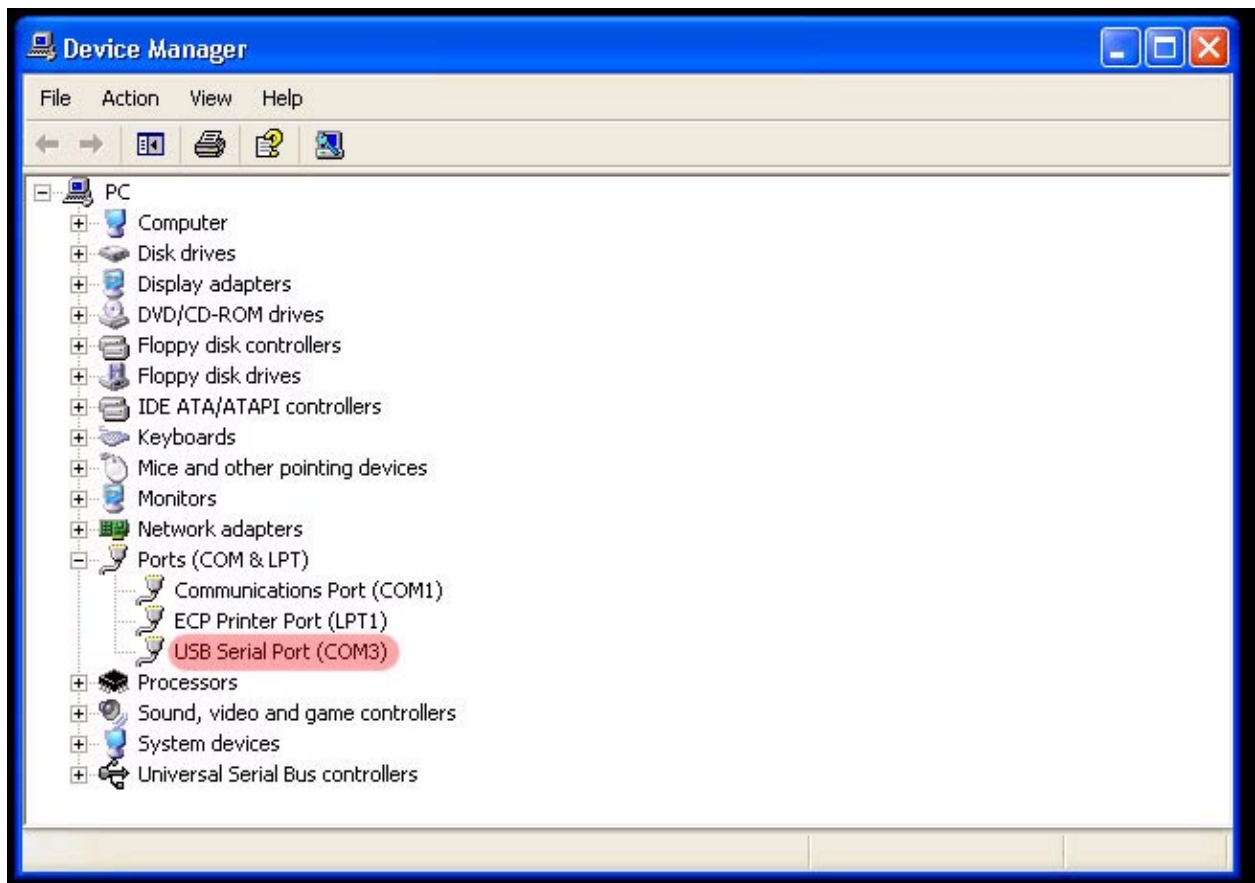


After the drivers' installed, an additional COM port appears in the Device Manager of Windows- usually it is COM3 :

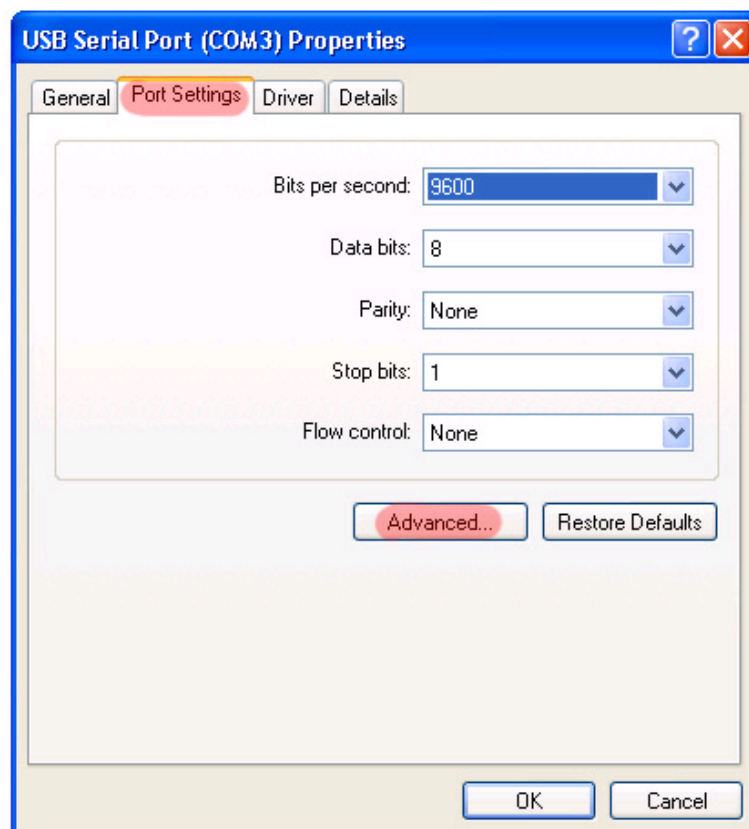


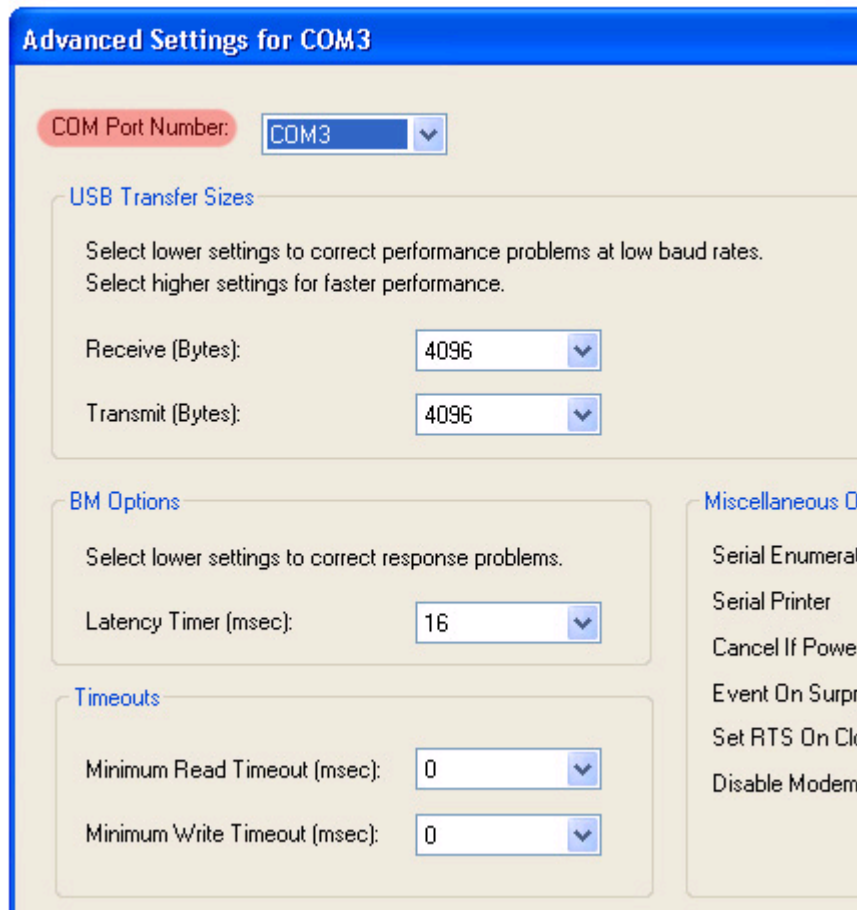






Windows allow you to change the number of the COM port, where the programmer is connected.





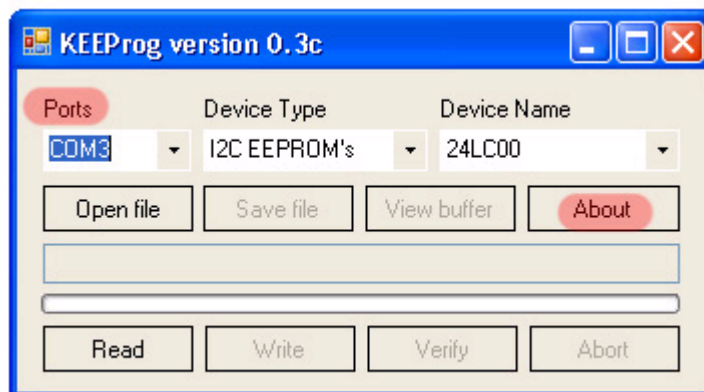
Drivers' installation finishes with those steps.

3. Download the latest version of software KEEProg\_24xxx from : <http://www.sigma-shop.com/software/keeprog/>

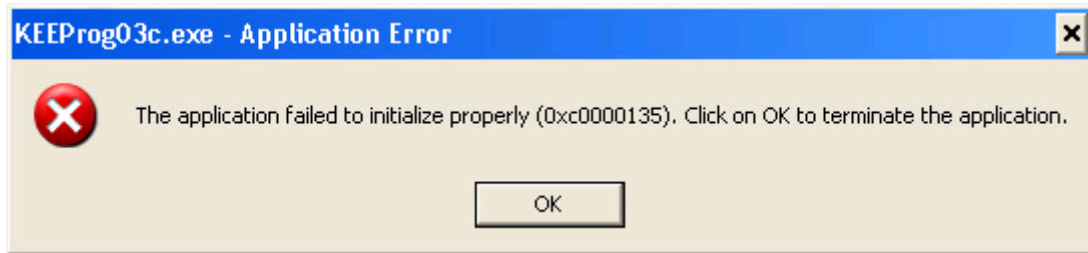
Unzip it to your own folder .....

Then start the software : KEEProg.exe

If everything is ok this message should appear:



If you get this message you see the following error :

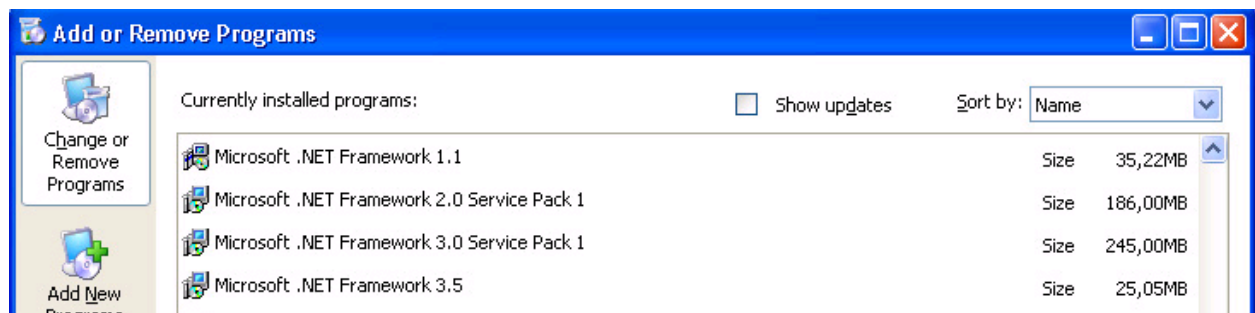


that means that you do not have the latest version of Microsoft .NET Framework installed on your computer.

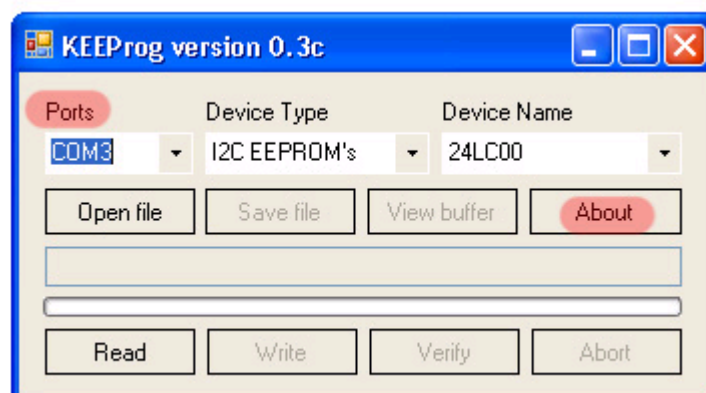
The program has to be installed on your computer in order to use the programmer.

You can download this from :

<http://www.microsoft.com/downloads/details.aspx?FamilyId=333325FD-AE52-4E35-B531-508D977D32A6&displaylang=en>



When you start the software it automatically recognizes the COM port.



When you click on about the version of the programmer, the following appears - KEEProg 24xx 1.0.



If something is wrong with the installation then nothing appears in these fields.

