

# Abacom ProfiLab application for switching on and off the KMTronic USB One Relay



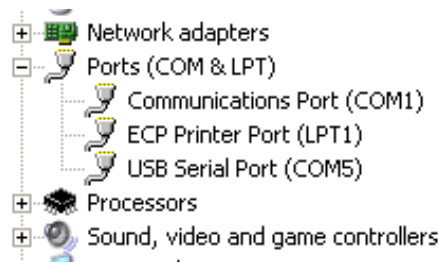
© KMTronic 2011

## Downloads:

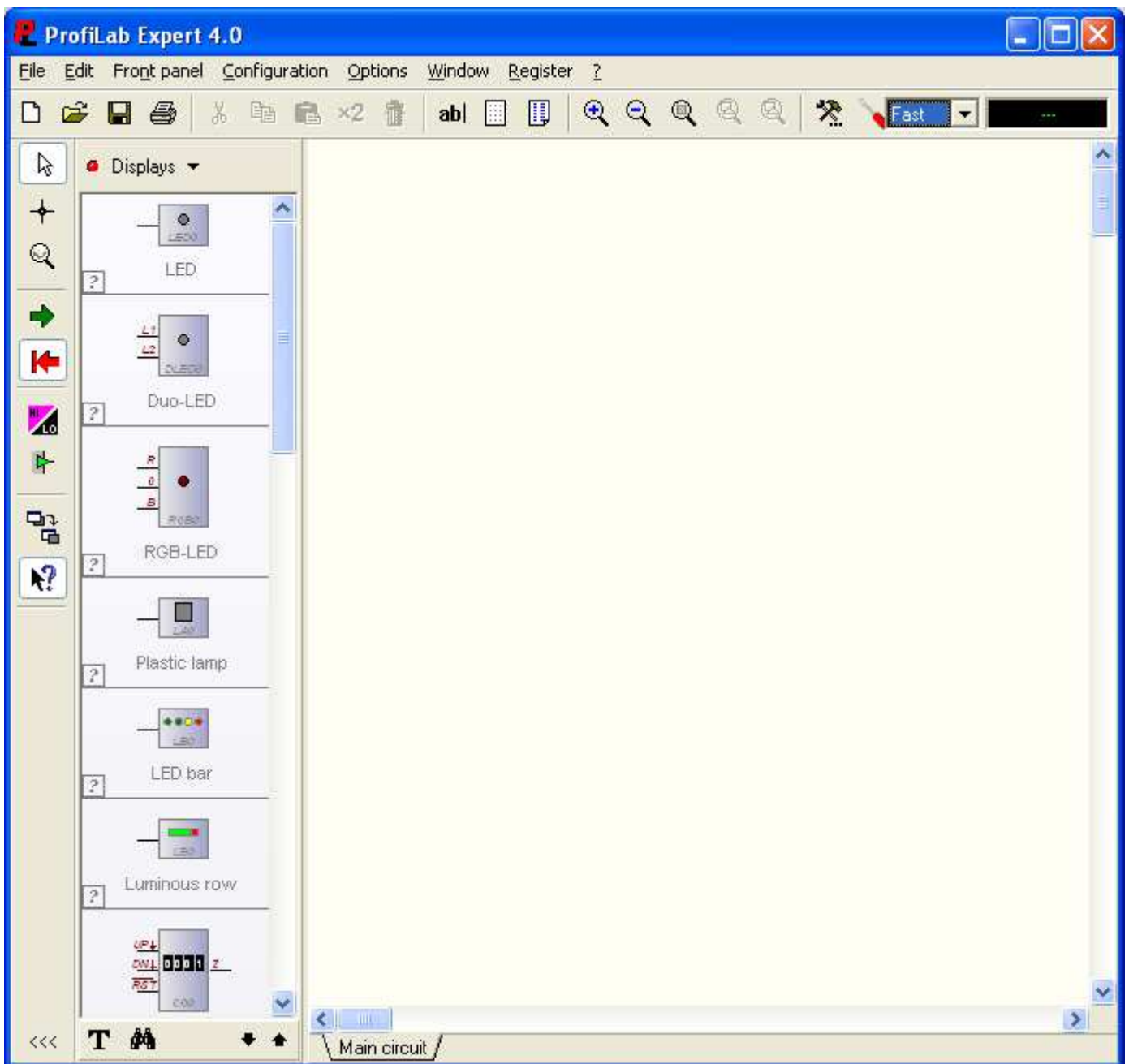
- FTDI drivers  
<http://www.ftdichip.com/Drivers/VCP.htm>
- ProfiLab by Abacom  
<http://www.abacom-online.de/uk/html/profilab.html>

## Step by step instructions:

1. Download the drivers
2. Connect USB relay and install drivers
3. Check in Device Manager COM port where the Relay is installed (in this example it is COM Port 5)

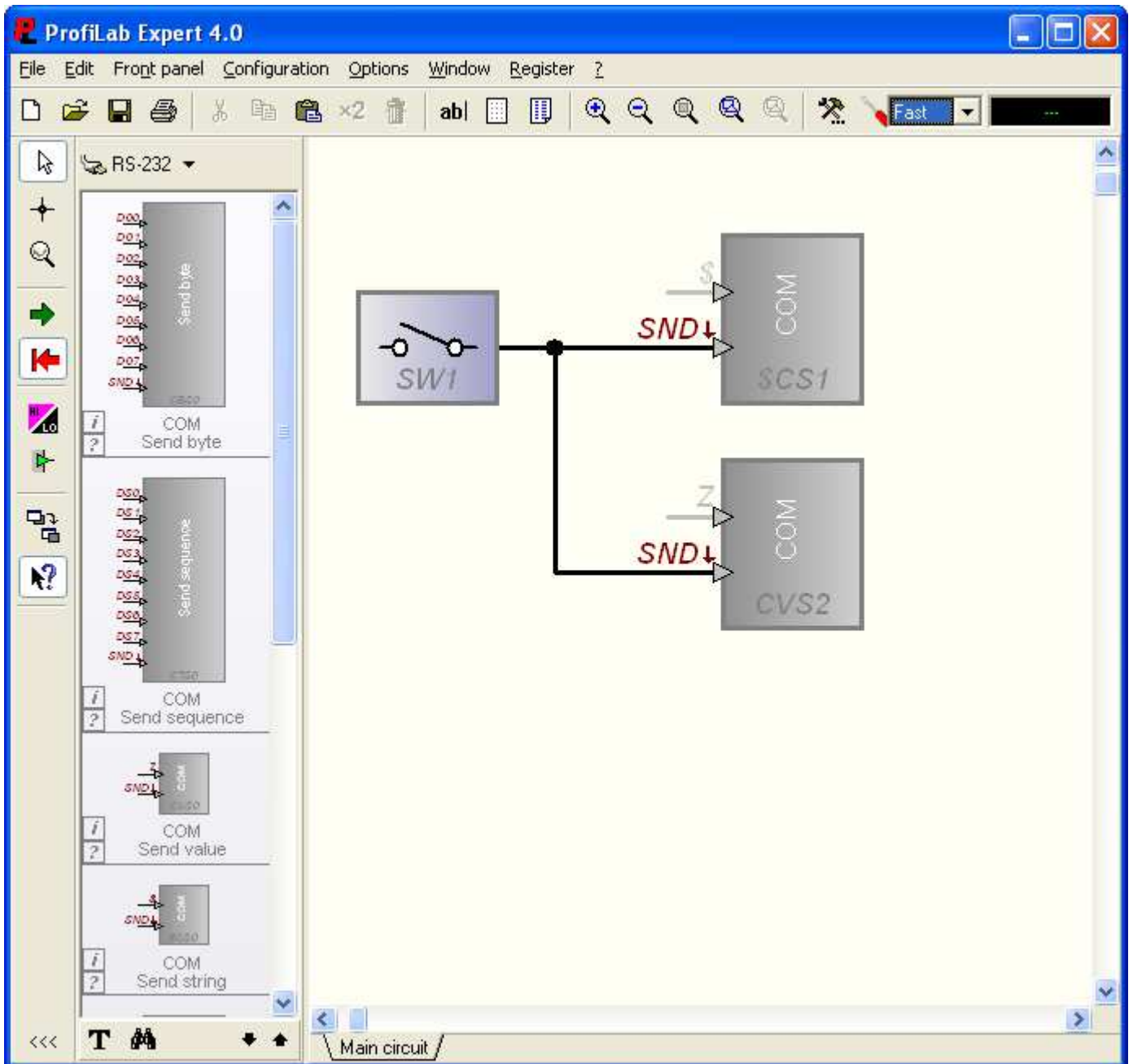


#### 4. Download, install and run ProfiLab



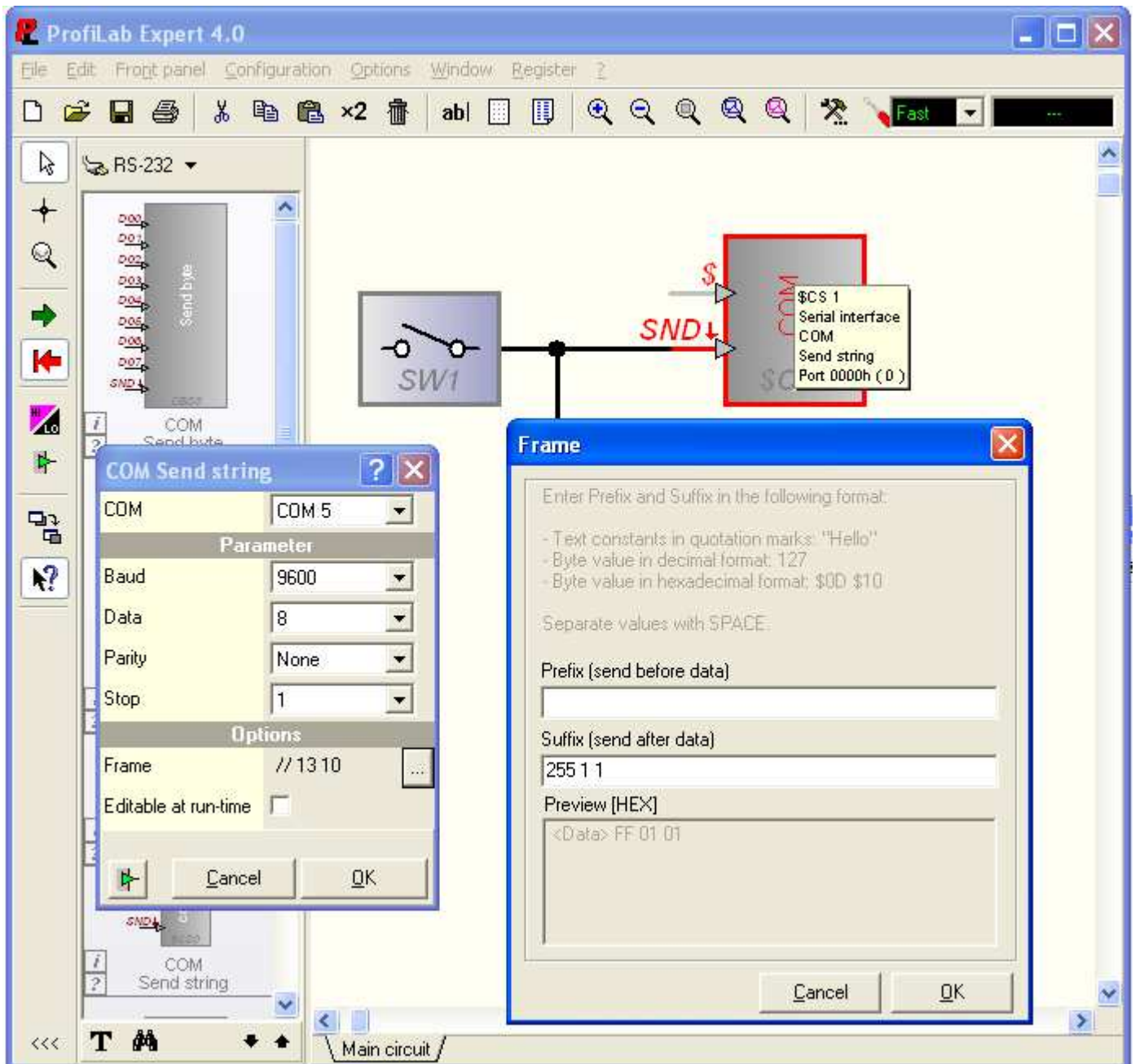
From **Control elements** > **Digital controls** insert one **"Switch"** module and from **Hardware Components** > **RS-232** two **"COM Send string"** modules.

Connect as picture below:

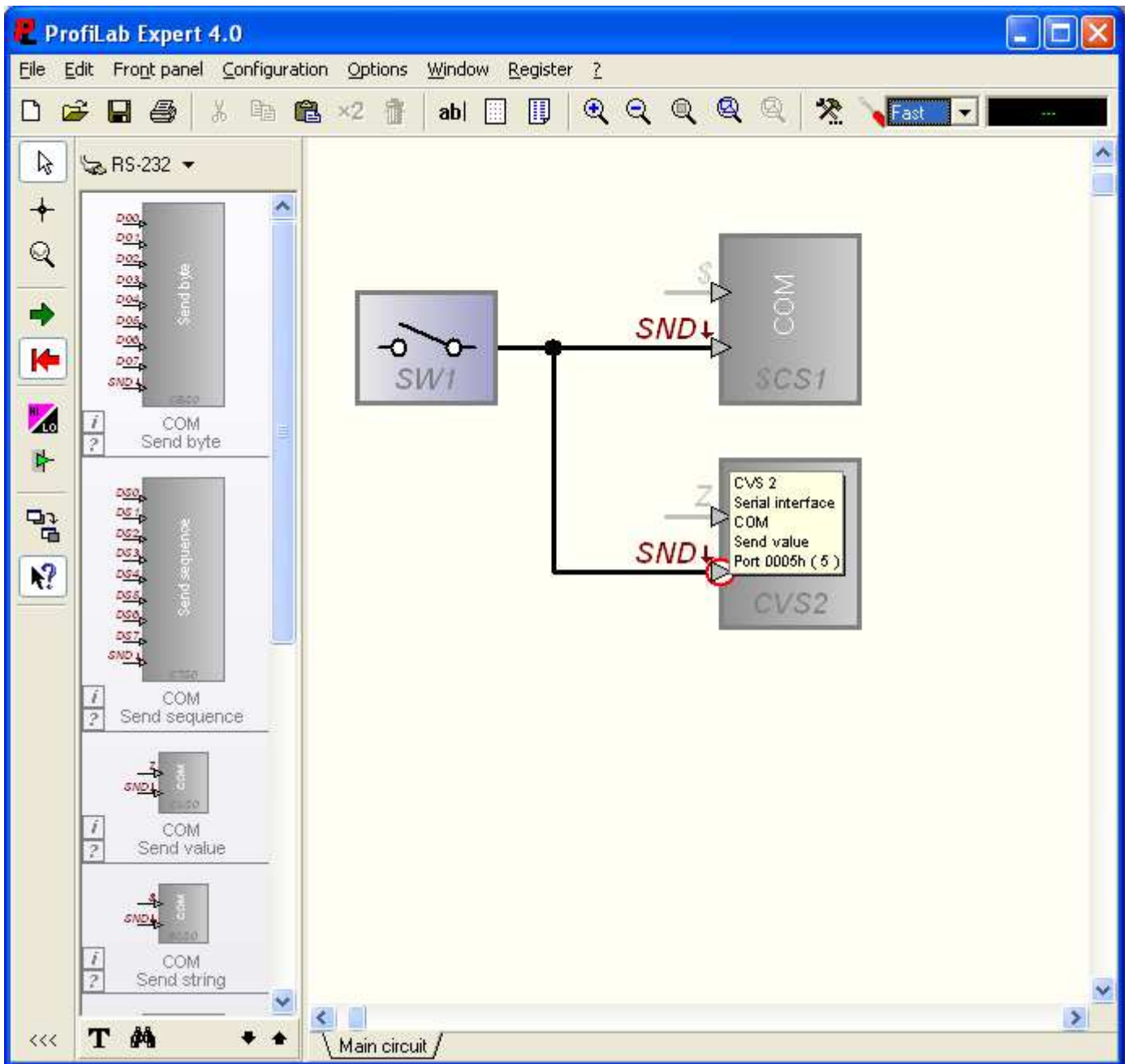


Now configure both COM modules for COM5 and write next strings in Frame > Suffix :

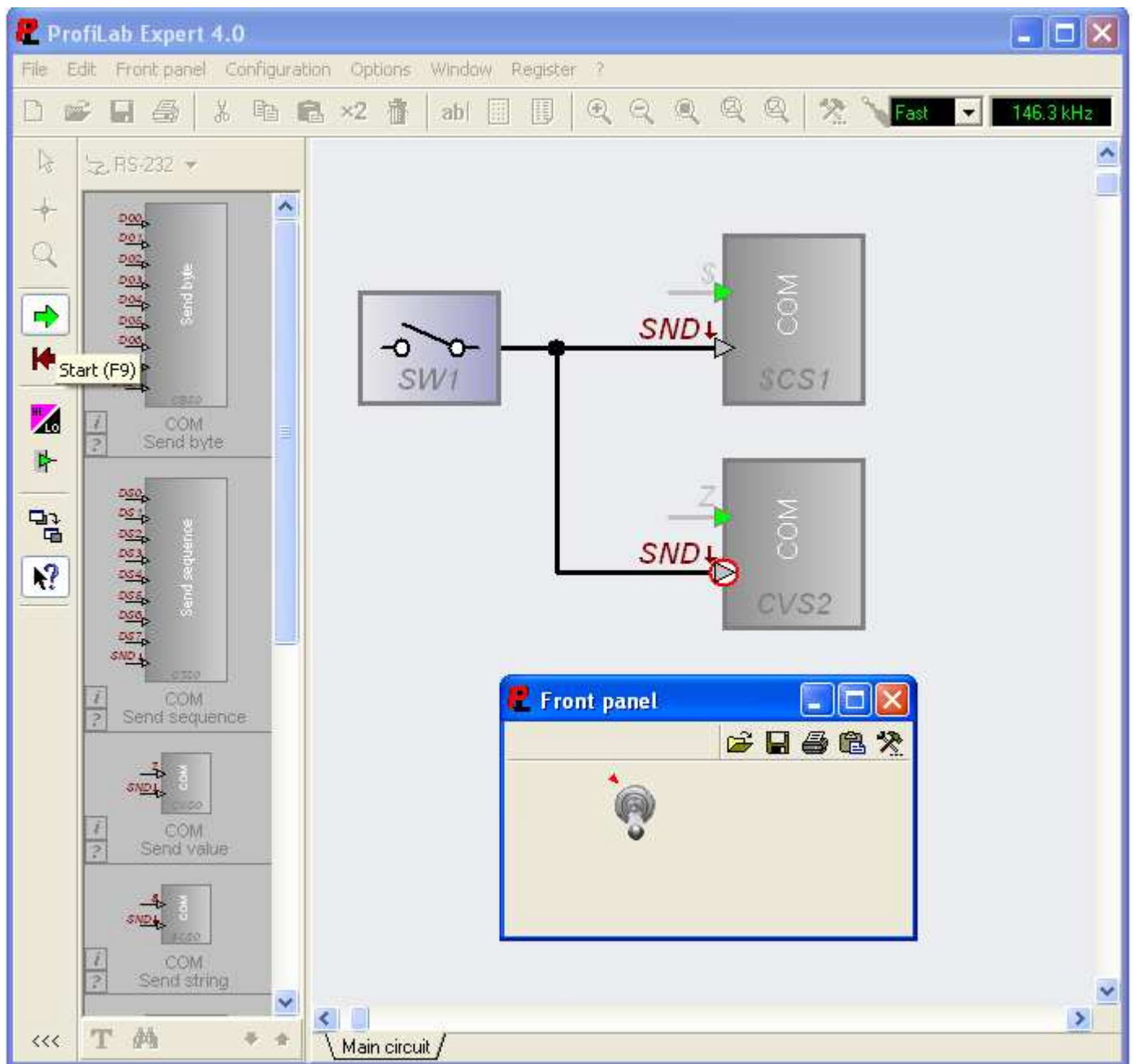
- First module "255 1 1"
- Second module "255 1 0"



Next Invert SND pin one COM module:

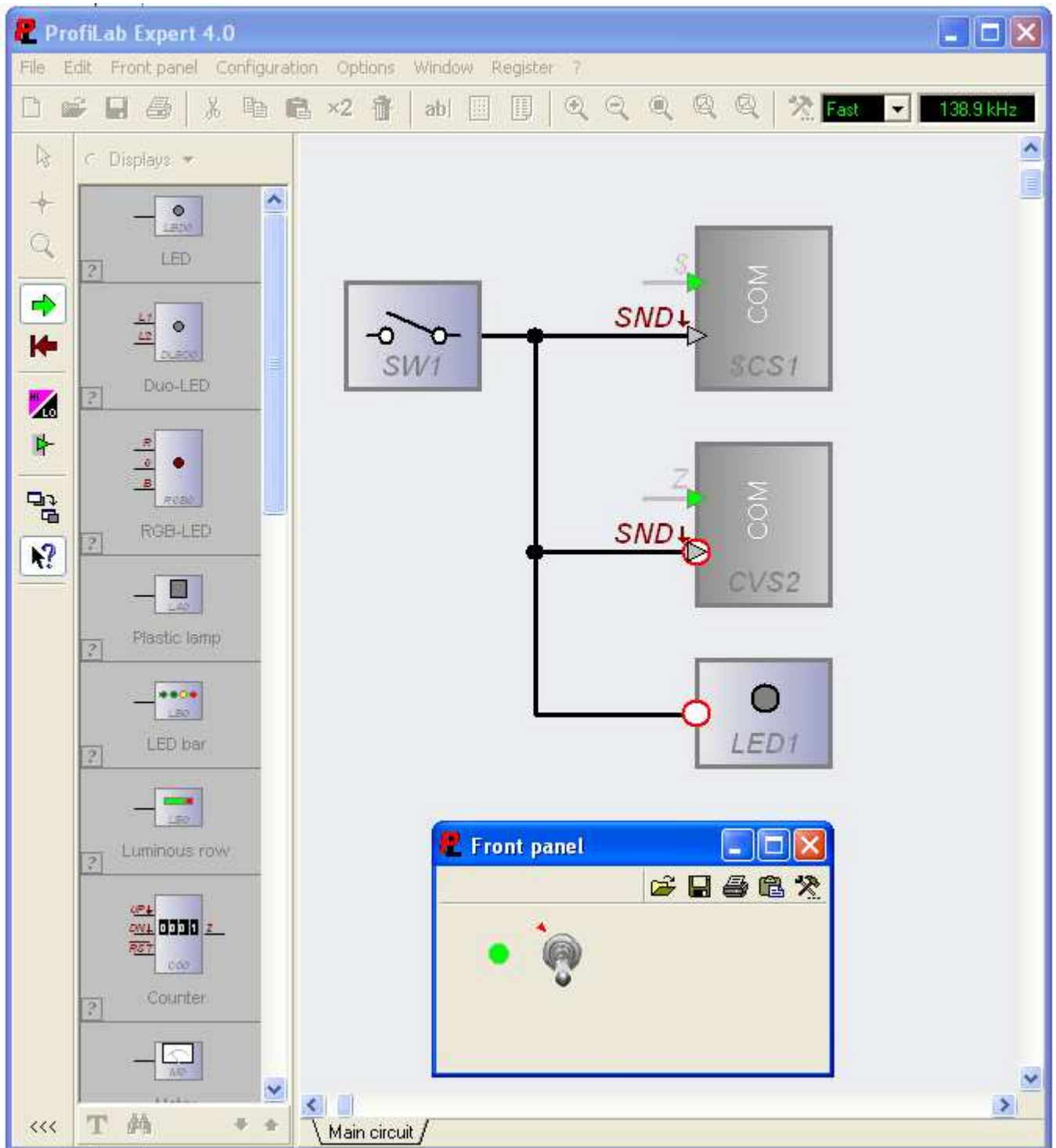


Run the application using Start button:

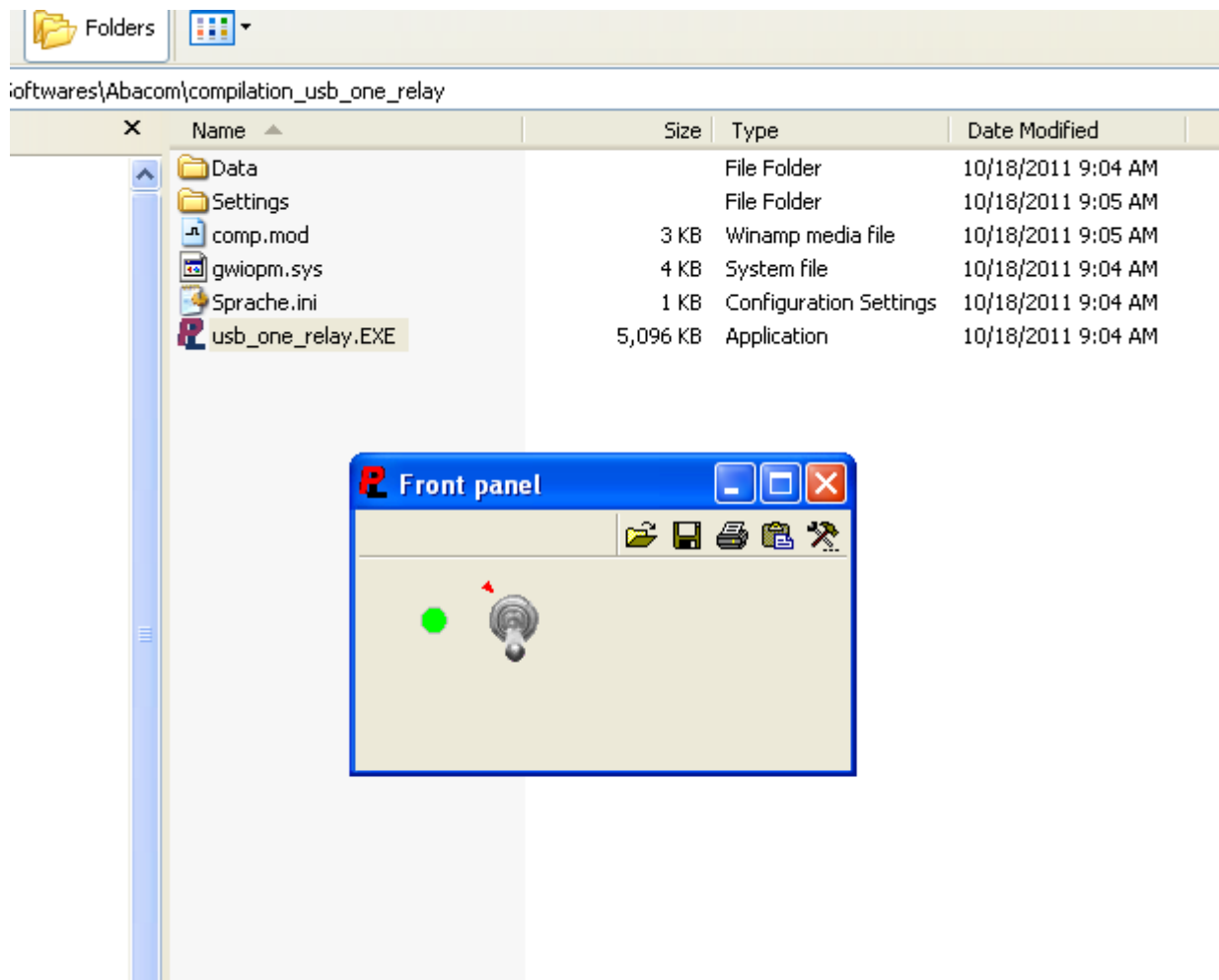




You can add one LED to indicate the relay status:



How you can compile and using this application in any PC without ProfiLab installed.



[http://sigma-shop.com/software/usb\\_relay/Abacom\\_ProfiLab\\_USB\\_One\\_Relay.zip](http://sigma-shop.com/software/usb_relay/Abacom_ProfiLab_USB_One_Relay.zip)

You can download this example project and compiled program from here: