

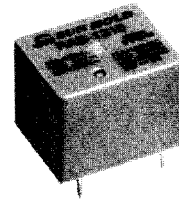
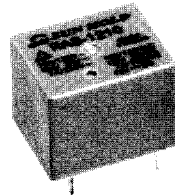
RAS SERIES

ORDER CODE

RAS-12-10-A

□: 1c
A: 1a
B: 1b
M: Automobile Relay

10: 10A 03: DC 3V
15: 15A 05: DC 5V
20: 20A (M type) 06: DC 6V
 09: DC 9V
COIL VOLTAGE 12: DC 12V
 18: DC 18V
 24: DC 24V
 36: DC 36V
TYPE 48: DC 48V



Main Features:

- UL, CUR & TUV safety approval.
- Heavy current up to 15 amps available, and special 20amps for using on the car.
- Epoxy seal type and flux free.
- Satisfying all requirements for use in car and household electric appliances.

COIL RATING (at 20°C)

NOMINAL VOLTAGE (VDC)	COIL RESISTANCE (Ω)(±10%)	POWER CONSUMPT -ION(W)	NOMINAL CURRENT (mA)(±10%)	PULL IN VOLTAGE (VDC)	DROP OUT VOLTAGE (VDC)	MAX. ALLOWABLE VOLTAGE (VDC)
3V	25 Ω	0.36W	120mA	75% MAX.	10% MIN.	130%
5V	69 Ω		72mA			
6V	100 Ω		60mA			
9V	225 Ω		40mA			
12V	400 Ω		30mA			
18V	900 Ω		20mA			
24V	1600 Ω		15mA			
36V	3600 Ω		10mA			
48V	4500 Ω		0.51W			
12V (M type)	225 Ω	0.64W	53.3mA	65%	8%	110%

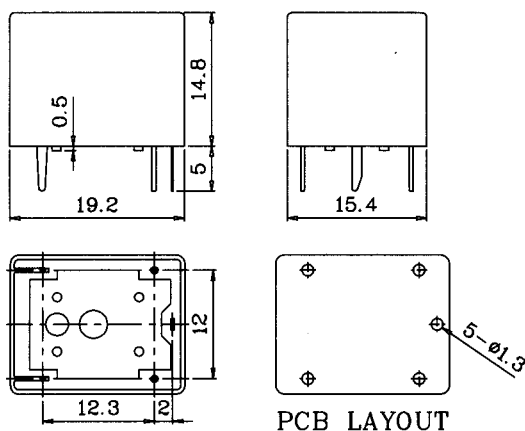
PERFORMANCE (at initial value)

Item	Type	10A	15A	20A
Contact Resistance		50mΩ Max. (initial value)		
Operate Time		10msec Max.		
Release Time		5msec Max.		
Dielectric Strength between coil & contact between contact		AC1500V (1min) AC750V (1min)		
Insulation Resistance		100MΩ Min.(DC500V)		
Operating Ambient Temperature		-30°C ~ +80°C		
Humidity		35 to 85% RH		
Vibration Resistance		10G (10~55Hz)(Dual amplitude:1.5mm)		
Shock Resistance		10G		
Life Expectancy Mechanically Electrically		10,000,000 ops. Min.(1800 ops./h) 100,000 ops. Min.(1200 ops./h)		
Weight		9.5g(about)		

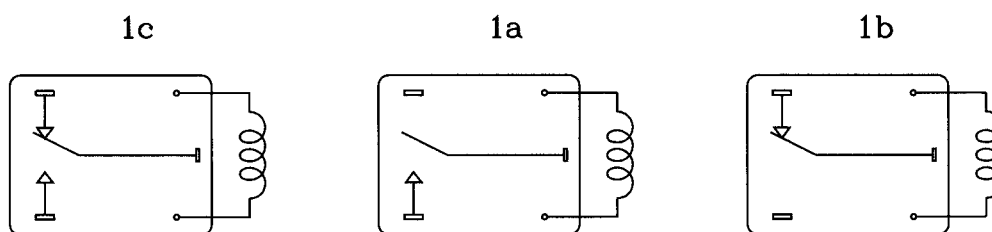
CONTACT RATING

Item \ Type	10A	15A	20A
Rated Carrying Current	AC120V 10A AC250V 7A DC24V 10A	AC125V 15A AC250V 10A DC24V 15A	DC14V 20A DC30V 15A AC120V 15A
Max. Allowable Current	15A	20A	20A
Max. Allowable Voltage	AC 240V DC 110V		
Max. Current (continual)	10A	15A	20A
Contact Material	Ag alloy		

DIMENSIONS(Unit: mm)



WIRING DIAGRAMS(Bottom View)



REFERENCE DATA

